




QUANDT CATTLE CO.

13TH ANNUAL PRODUCTION SALE

02/18/25



AT THE SALE FACILITY | 10861 88TH ST. | OAKES, ND



WELCOME

TO THE 13TH ANNUAL QUANDT CATTLE CO. PRODUCTION SALE

We would first like to extend a big thank you to all our past customers who have been loyal to our program. It is a tremendous honor to continue hosting this event each year. We are very excited to share this year's offering, which includes 90 head of purebred Simmental and SimAngus bulls along with 20 bred heifers. This offering truly has something for everyone, from high-quality growth bulls to heifer bulls. These animals stem from the 300-head Simmental herd we have built over the years.

We remain committed to providing cattle that work for our commercial customers. We believe that combining acceptable calving ease and birth weight with high growth and strong maternal backing is the cornerstone of our program. We hope this year's bulls and bred heifers reflect that dedication.

Once again, we want to express our deepest gratitude for your continued support and trust in Quandt Cattle Company.

Your partnership has been instrumental in our success over the years.

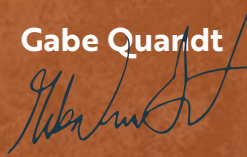
This marks our second year at our new facility, which will be ready to welcome you on February 18th. We encourage you to come and view not only the bulls but also the bred heifers. As a token of our appreciation, we are offering a \$100 sale credit if you visit before the sale.

For any inquiries or assistance, please do not hesitate to reach out to Jason or Gabe. We are here to answer any questions about the current offering or past sales. We strongly encourage you to visit the cattle in person. Once again, thank you for your interest in our program.

THANK YOU, THE QUANDTS

Gabe Quandt

Jason Quandt



MEET OUR TEAM

THE CURRENT PARTNERS



THE QUANDT FAMILY



THE PICTURE PEN CREW



JASON QUANDT 701-710-0080 · GABE QUANDT 701-408-9154 · JASON@QUANDTBROTHERS.COM
10861 88th St. SE, Oakes, ND 58474 · FIND US ON FACEBOOK @QBCATTLECOMPANY

WWW.QUANDTBROTHERS.COM

SALE DETAILS

QUANDT CATTLE COMPANY

NEW SALE FACILITY:

10861 88th St. SE, Oakes, ND 58474

Jason Quandt 701-710-0080 • GABE QUANDT 701-408-9154

TUESDAY, FEBRUARY 18, 2025

Pre-sale viewing & lunch - 9 AM

Sale starts at 1 PM

SALE REPRESENTATIVES

Kacey Holm.....701-730-4070

Perry Thomas.....701-370-8336

Kelly Klein.....701-320-5817

Tony Heins.....701-400-4435

Kirby Goettsch.....605-380-3939

AUCTIONEER

Dustin Carter.....712-898-9972

HERDSMAN

Mason Kamnitz.....701-368-8319

MARTIN-TRUDEAU INSURANCE

Christopher Nelson • 605-656-6345 • cnelson@juffer.com

VIDEOS

Videos and catalog available online at:

www.dvauction.com & www.quandtbrothers.com • Videos Filmed By Logan Hoffman with DVAuction. **Logan Hoffman** • 701-388-2618

MARKETING MANAGER

Addison Rall • www.addisonkdesign.com • Sale photos, catalog design, social media and print advertising by Addison K Creative

VOLUME DISCOUNT

Buy 3 get 3% off • Buy 4 get 4% off • Buy 5 or more get 5% off

EMBRYO TRANSFER CALVES

ET calves tend to have higher birth weights. Calves BW's have tendencies to follow receipt dams. Use EPDs for birthweights on ET calves.

DELIVERY

Free Delivery of Bulls in North Dakota and North Eastern South Dakota. We will also try to assist in getting cattle shipped further away, if needed.

ADG

ADG on the bulls is a 108 day feed test

SALE CREDIT

Anyone who makes the trip to evaluate this year's herd bull prospects prior to Sunday, February 16, 2025, will receive \$100 in sale credit to be used in this year's sale. We want you to see these bulls in person and get to know our operation. Give Jason or Gabe a call to schedule a viewing.

LOT 1



THE B452 LEGACY CONTINUES.

Kicking off this year's sale right, this exceptional Falcon son that has been a standout from day one. Unfortunately, he is the only bull from this flush out of the B452 cow. B452 has been one of the most consistent producers in our herd, leaving her mark on every calf she raises. Her legacy includes QB Marvel (Bata Simmentals), QB Black Badger (Mandan Lake Simmental), QB Verdict (Dennis Fannik), QB Blueprint (Begger Simmentals), and VJT Driftwood (Hansen Simmental). Along with that as you can see that this sire group falcon has worked really well for us and sold a 20,000-dollar bull to G and D Simmentals last year. Really excited about this calf's potential and also possessing a great disposition.

LOT 1 **QB M03** GENOMIC ENHANCED PB SM

ASA# 4379096 | Homo Black Homo Polled | BD: 3/2/2024 | ET

SIRE HOOK'S EAGLE 6E
LRS FALCON 442G
 LRS MS CLASS ACT 437B

DAM W/C UNITED 956Y
RUST MISS 452B
 TNT MISS ZADIE M30

BW	101
ADJ. WW	867
1/11 WT	1510
ADJ. YW	1804
ADJ. SC	40.8
WDA	4.82
ADG	5.88

% EPDS	CE	BW	WW	YW	ADG	MCE	MM	MWW	STAY
	8.5	4.1	111	190.1	0.49	4.4	23.7	79.1	13.6
	85	95	1	1	1	80	45	2	75

% EPDS	DOC	CW	YG	MARB	BF	REA	API	TI
	10.1	70.2	-0.4	0.2	-0.081	1.41	139.7	98.6
	70	1	50	45	30	1	40	5

This bull calf has a lot to offer, especially being out of a first-calf heifer. The D662 Ironsides daughters have really proven themselves and consistently produce great calves. With a birth weight of 82 pounds and a weaning weight of 821 pounds, this bull has the numbers to back him up. He's well-balanced and has the genetics to make a strong addition to any herd.



LOT 2

LOT 2 **QB M88** GENOMIC ENHANCED **PB SM**

ASA# 4379294 | Homo Black Homo Polled | BD: 2/15/2024

SIRE HOOK'S EAGLE 6E
LRS FALCON 442G
 LRS MS CLASS ACT 437B

DAM SPRINGCREEK IRONSIDES 53G
QB MS K219
 TRAXS MISS PEND D662

BW	82
ADJ. WW	821
1/11 WT	1305
ADJ. YW	1556
ADJ. SC	38
WDA	3.97
ADG	4.62

EPDS	CE	BW	WW	YW	ADG	MCE	MM	MWW	STAY
	11	1.7	96.4	152.2	0.35	7.1	21.7	69.8	17
%	60	60	5	4	4	30	65	20	35
EPDS	DOC	CW	YG	MARB	BF	REA	API	TI	
	12.6	59.4	-0.31	0.14	-0.06	1.13	141.2	89.8	
%	40	1	85	60	85	10	35	20	

LOT 3 **QB M60** GENOMIC ENHANCED **3/4 SM 1/4 AN**

ASA# 4379312 | Homo Black Homo Polled | BD: 2/12/2024

SIRE HOOK'S EAGLE 6E
LRS FALCON 442G
 LRS MS CLASS ACT 437B

DAM QB LAST FRONTIER F42
QB MS K239
 TSN MISS RHS C176

BW	76
ADJ. WW	794
1/11 WT	1355
ADJ. YW	1609
ADJ. SC	36.8
WDA	4.08
ADG	5.14

EPDS	CE	BW	WW	YW	ADG	MCE	MM	MWW	STAY
	14.8	-1.5	80.6	129.3	0.3	7.9	28.9	69.1	16
%	25	25	35	30	30	35	15	20	35
EPDS	DOC	CW	YG	MARB	BF	REA	API	TI	
	14.9	27.1	-0.36	0.46	-0.042	1.01	149.8	89.2	
%	20	70	15	35	45	10	25	25	



LOT 3

Here's another impressive Falcon bull, this time out of a first-calf QB Last Frontier daughter. With 11 EPDs ranking in the top 30% of the breed, this bull combines strong genetics with performance. Nearly hitting an 800-pound weaning weight from a first-calf heifer, these Last Frontier daughters have truly proven their value in our program. This calf is a great example of their success.



LOT 4 **QB M75** GENOMIC ENHANCED **PB SM**
 ASA# 4379131 | Homo Black Homo Polled | BD: 3/10/2024
 HART ASSULT 059G
SIRE **QB SPECIAL OPS K11**

BW	111
ADJ. WW	827
1/11 WT	1490
ADJ. YW	1823
ADJ. SC	38.8
WDA	4.89
ADG	6.24

 LRS GRADE BREAK 114B
DAM **QB MS D629**
 RUST MISS 452B

EPDS	CE	BW	WW	YW	ADG	MCE	MM	MWW	STAY
	3.1	7.5	110.3	185.5	0.47	1.8	23.3	78.4	15.5
%	99	99	1	1	1	99	50	3	55
EPDS	DOC	CW	YG	MARB	BF	REA	API	TI	
	7.2	70.5	-0.23	0.39	-0.065	0.98	138.9	96.6	
%	90	1	99	20	70	30	40	10	

This sire group has been one we've been excited about all year. We sold Special Ops to Hansen Simmental two years ago for \$30,000, and we've been thrilled with the calves he's produced. He consistently stamps his calves with his signature look—big, strong-topped, and full of eye appeal. This dam has been a solid producer in our program, tracing back to the B452 cow and being a full sibling to QB Blueprint. She has raised six calves—three bulls and three heifers—with the females still actively working in our herd.



LOT 5 **QB M67** GENOMIC ENHANCED **PB SM**
 ASA# 4379108 | Homo Black Homo Polled | BD: 3/10/2024
 HART ASSULT 059G
SIRE **QB SPECIAL OPS K11**

BW	98
ADJ. WW	735
1/11 WT	1245
ADJ. YW	1500
ADJ. SC	40.3
WDA	4.08
ADG	4.8

 MR NLC UPGRADE U8676
DAM **TSN MISS UPGRADE C247**
 TSN MISS BISMARCK Z332

EPDS	CE	BW	WW	YW	ADG	MCE	MM	MWW	STAY
	6	2.7	90.5	136.7	0.29	3.1	25.8	71	14.6
%	99	80	15	15	25	95	30	15	65
EPDS	DOC	CW	YG	MARB	BF	REA	API	TI	
	9.8	37.9	-0.38	-0.08	-0.052	1.16	113.1	79.1	
%	75	20	55	99	85	10	90	55	

This calf stands out with his eye appeal, impressive growth, and a well-balanced EPD profile. His dam has been a reliable producer, consistently placing bulls in our sale for the past three years, including one sold to Garrett Penfield last year.



LOT 6 **QB M83** GENOMIC ENHANCED **PB SM**
 ASA# 4379196 | Homo Black Homo Polled | BD: 3/5/2024
 HART ASSULT 059G
SIRE **QB SPECIAL OPS K11**

BW	104
ADJ. WW	735
1/11 WT	1290
ADJ. YW	1553
ADJ. SC	38
WDA	4.16
ADG	5.14

 LRS GRADE BREAK 114B
DAM **QB MS G967**
 QB MS D606

EPDS	CE	BW	WW	YW	ADG	MCE	MM	MWW	STAY
	5	5.7	96.4	151.6	0.35	3.6	23.7	71.9	18.3
%	99	99	5	4	4	90	45	15	20
EPDS	DOC	CW	YG	MARB	BF	REA	API	TI	
	11.6	41	-0.39	0.41	-0.082	0.97	144.4	91.3	
%	55	15	55	15	30	30	30	15	

This is a really nice calf with a good frame, strong growth, and plenty of volume. Like many Grade Break daughters, his dam has proven to be a consistent producer, stamping her calves with quality. Last year, she raised a bull that sold to Guleson Farms. This calf has developed really well.

LOT 7 **QB M77** GENOMIC ENHANCED **3/4 SM 1/4 AN**

ASA# 4379080 | Homo Black Homo Polled | BD: 2/27/2024 | ET

BRIDLE BIT ECLIPSE E744
SIRE HOOK'S GALILEO 210G
 HOOK'S EVITA 18E
 W/C UNITED 956Y
DAM RUST MISS 452B
 TNT MISS ZADIE M30

BW	79
ADJ. WW	748
1/11 WT	1335
ADJ. YW	1581
ADJ. SC	38.6
WDA	4.21
ADG	5.23

EPDS	CE	BW	WW	YW	ADG	MCE	MM	MWW	STAY
	11.4	0.7	94.1	152.4	0.36	7.8	31.2	78.1	15
%	70	65	5	4	10	35	10	3	50

EPDS	DOC	CW	YG	MARB	BF	REA	API	TI
	13	48.2	-0.07	0.67	-0.015	0.61	155.2	98.5
%	45	15	90	15	85	65	20	4

Here's another outstanding calf out of the B452 cow. The Galileo cross on this proven dam is an exciting combination, resulting in a well-balanced EPD profile. This bull stands out with a strong top, excellent hip structure, and nine EPDs ranking in the top 20% of the breed. He's a great example of the quality genetics this cow family consistently delivers.



LOT 7

LOT 8 **QB M30** GENOMIC ENHANCED **PB SM**

ASA# 4379322 | Homo Black Homo Polled | BD: 2/24/2024

BRIDLE BIT ECLIPSE E744
SIRE HOOK'S GALILEO 210G
 HOOK'S EVITA 18E
 SPRINGCREEK IRONSIDES 53G
DAM QB MS K250
 TRAXS MISS PEND D662

BW	86
ADJ. WW	808
1/11 WT	1290
ADJ. YW	1570
ADJ. SC	36.4
WDA	4.03
ADG	4.8

EPDS	CE	BW	WW	YW	ADG	MCE	MM	MWW	STAY
	11	2	99.6	159.5	0.37	8.8	28.8	78.5	19.4
%	60	70	3	2	2	15	15	2	10

EPDS	DOC	CW	YG	MARB	BF	REA	API	TI
	17.1	48.7	-0.2	0.66	-0.041	0.82	175	104.7
%	5	5	99	3	95	65	4	2

I have a feeling I'll be saying this for years to come, but this D662 Ironsides daughter really impressed us with her first calf. Weaning off at 808 pounds, this calf not only shows excellent growth but also boasts a strong EPD profile, with API and TI both ranking in the top 5% of the breed.



LOT 8

LOT 9 **QB M31** GENOMIC ENHANCED **PB SM**

ASA# 4379163 | Homo Black Homo Polled | BD: 3/7/2024

BRIDLE BIT ECLIPSE E744
SIRE HOOK'S GALILEO 210G
 HOOK'S EVITA 18E
 LFE THE RIDDLER 323B
DAM TRAXS MISS RIDDLER F842
 TRAXS BLK DIAMOND C567

BW	101
ADJ. WW	730
1/11 WT	1202
ADJ. YW	1430
ADJ. SC	35.6
WDA	3.9
ADG	4.4

EPDS	CE	BW	WW	YW	ADG	MCE	MM	MWW	STAY
	9.4	3.5	92.6	144.8	0.33	6.4	28.9	75.1	15.1
%	80	90	10	10	10	45	15	10	60

EPDS	DOC	CW	YG	MARB	BF	REA	API	TI
	16.7	51.5	-0.34	0.51	-0.088	0.92	150.8	95.2
%	10	3	75	10	30	40	25	10

This calf traces back to a strong Traxinger cow we purchased from the state sale a few years ago. He stands out with his impressive frame and tremendous potential. Backed by a great EPD profile, he boasts 10 EPDs ranking in the top 25% of the breed.



HOOK'S GALILEO 210G
 SIRE OF LOTS 7-9



LOT 10 **QB M69** GENOMIC ENHANCED **PB SM**

ASA# 4379095 | Homo Black Homo Polled | BD: 3/7/2024 | ET

SIRE WS ALL-AROUND Z35
OMF EPIC E27
OMF TIME LESS B100
W/C UNITED 956Y

DAM RUST MISS 452B
TNT MISS ZADIE M30

BW	99
ADJ. WW	800
1/11 WT	1285
ADJ. YW	1527
ADJ. SC	39.6
WDA	4.17
ADG	4.56

EPDS	CE	BW	WW	YW	ADG	MCE	MM	MWW	STAY
	11.4	1.1	81.1	126.4	0.28	6.1	25.5	65.9	16.2
%	55	50	40	30	30	50	30	35	45

EPDS	DOC	CW	YG	MARB	BF	REA	API	TI
	5.7	39.8	-0.4	0.13	-0.063	1.13	134.5	81.8
%	95	15	50	60	70	10	50	45

These next two flush brothers also trace back to the renowned B452 cow. This particular calf is extremely thick and impressive, boasting an 800-pound weaning weight. He's packed with performance and showcases the strength of his pedigree. A standout bull with the potential to make a big impact.

LOT 11 **QB M86** GENOMIC ENHANCED **PB SM**

ASA# 4379093 | Homo Black Homo Polled | BD: 3/4/2024 | ET

SIRE WS ALL-AROUND Z35
OMF EPIC E27
OMF TIME LESS B100
W/C UNITED 956Y

DAM RUST MISS 452B
TNT MISS ZADIE M30

BW	113
ADJ. WW	750
1/11 WT	1350
ADJ. YW	1632
ADJ. SC	33.9
WDA	4.34
ADG	5.54

EPDS	CE	BW	WW	YW	ADG	MCE	MM	MWW	STAY
	9.7	3.6	90.9	144.9	0.34	4.9	25.5	70.8	14.4
%	75	95	15	10	10	70	30	15	65

EPDS	DOC	CW	YG	MARB	BF	REA	API	TI
	7.6	52.2	-0.31	0.23	-0.056	1.09	133.7	86.6
%	90	3	85	40	85	15	50	30

Much like his brother, this calf is nearly identical in terms of quality and performance, making it hard to separate the two. He's structurally correct, with a smooth shoulder, strong top, and excellent depth of body. With six traits ranking in the top 15% of the breed, he demonstrates balanced performance, and uniformity within this flush.

LOT 12 **QB M28** GENOMIC ENHANCED **PB SM**

ASA# 4379193 | Homo Black Homo Polled | BD: 2/26/2024 | ET

SIRE CLRS GUARDIAN 317G
BCI STRUCTURE J111
BCI MS. C5102

DAM LRS PENDLETON 669Z
TRAXS MISS PEND D662
TRAXS MISS A389

BW	85
ADJ. WW	788
1/11 WT	1275
ADJ. YW	1474
ADJ. SC	34.1
WDA	4.01
ADG	4.31

EPDS	CE	BW	WW	YW	ADG	MCE	MM	MWW	STAY
	11.8	0.5	80.6	115.1	0.22	5.8	19.7	60.1	23.2
%	45	35	40	55	70	55	80	60	1

EPDS	DOC	CW	YG	MARB	BF	REA	API	TI
	13.4	31.6	-0.19	0.21	-0.022	0.7	151.2	81.9
%	30	35	99	45	99	85	25	45

Kicking off the Structure sire group, this set of D662 sons is truly impressive. D662 has been phenomenal for our herd, consistently producing standout herd sires and exceptional daughters, as you'll see throughout the catalog. This calf is no exception, tremendous depth of body, and a wide, square hip. He's big-bodied and well-structured, with the kind of capacity and balance that makes him a standout.





LOT 13 **QB M47** GENOMIC ENHANCED **PB SM**
 ASA# 4379084 | Homo Black Homo Polled | BD: 3/6/2024 | ET
SIRE CLRS GUARDIAN 317G
BCI STRUCTURE J111
 BCI MS. C5102
DAM LRS PENDLETON 669Z
TRAXS MISS PEND D662
 TRAXS MISS A389

BW	110
ADJ. WW	780
1/11 WT	1275
ADJ. YW	1518
ADJ. SC	39
WDA	4.13
ADG	4.63

EPDS	CE	BW	WW	YW	ADG	MCE	MM	MWW	STAY
	9.5	4.6	94.6	140.8	0.29	4.4	19.7	67.1	19.1
%	80	99	10	10	25	80	80	30	15
EPDS	DOC	CW	YG	MARB	BF	REA	API	TI	
	10.8	51.3	-0.14	0.17	-0.025	0.8	136.6	84.3	
%	65	3	99	50	99	70	45	35	

This is an exciting set of bulls, notable for their uniformity and overall quality. This particular calf stands out with impressive growth traits, ranking in the top 10% of the breed. Having a 780-pound weaning weight.

LOT 14 **QB M08** GENOMIC ENHANCED **PB SM**
 ASA# 4379100 | Hetero Black Homo Polled | BD: 3/6/2024 | ET
SIRE CLRS GUARDIAN 317G
BCI STRUCTURE J111
 BCI MS. C5102
DAM LRS PENDLETON 669Z
TRAXS MISS PEND D662
 TRAXS MISS A389

BW	108
ADJ. WW	790
1/11 WT	1345
ADJ. YW	1617
ADJ. SC	38
WDA	4.35
ADG	5.19

EPDS	CE	BW	WW	YW	ADG	MCE	MM	MWW	STAY
	9.2	1.5	87.2	130.5	0.27	4	19.7	63.3	21.1
%	80	55	20	25	35	85	80	45	4
EPDS	DOC	CW	YG	MARB	BF	REA	API	TI	
	10.6	53.9	-0.18	0.46	-0.036	0.84	159.2	90.9	
%	65	2	99	15	99	60	15	20	

Weaning off at an impressive 790 pounds, this bull boasts the highest weaning weight among his brothers and could very well be the standout of the group. He's deep-sided and wide based. The only knock on him is that he is heterozygous black, but his performance and structural quality more than make up for it.

LOT 15 **QB M36** GENOMIC ENHANCED **PB SM**
 ASA# 4379079 | Homo Black Homo Polled | BD: 3/2/2024 | ET
SIRE CLRS GUARDIAN 317G
BCI STRUCTURE J111
 BCI MS. C5102
DAM W/C UNITED 956Y
RUST MISS 452B
 TNT MISS ZADIE M30

BW	106
ADJ. WW	816
1/11 WT	1330
ADJ. YW	1560
ADJ. SC	37.8
WDA	4.25
ADG	4.68

EPDS	CE	BW	WW	YW	ADG	MCE	MM	MWW	STAY
	6.8	4.3	99.8	154.2	0.34	3.1	24.3	74.3	18.2
%	95	99	3	3	10	95	40	10	20
EPDS	DOC	CW	YG	MARB	BF	REA	API	TI	
	5	52	-0.16	0.24	-0.034	0.78	138.9	89.8	
%	99	3	99	40	99	70	40	20	

The B452 flush continues to impress, and these next two calves are no exception. This bull is packed with eye appeal, showcasing a stout build, a level and powerful top, and excellent muscle definition. With high growth and a weaning weight exceeding 800 pounds, he combines style with performance, making him a standout in this flush.

LOT 16 **QB M43** GENOMIC ENHANCED **PB SM**
 ASA# 4379165 | Homo Black Homo Polled | BD: 3/4/2024 | ET
SIRE CLRS GUARDIAN 317G
BCI STRUCTURE J111
 BCI MS. C5102
DAM W/C UNITED 956Y
RUST MISS 452B
 TNT MISS ZADIE M30

BW	104
ADJ. WW	690
1/11 WT	1205
ADJ. YW	1445
ADJ. SC	35.4
WDA	3.87
ADG	4.74

EPDS	CE	BW	WW	YW	ADG	MCE	MM	MWW	STAY
	6.7	3.6	87.3	140.8	0.33	2.9	24.3	68	20.4
%	95	95	20	10	10	95	40	25	5
EPDS	DOC	CW	YG	MARB	BF	REA	API	TI	
	6.9	44.6	-0.12	0.31	-0.017	0.68	144	84.9	
%	95	10	99	30	99	90	30	35	

This bull mirrors the look and quality of his flush brother, with a clean, well-balanced design and loads of eye appeal. He moves out with ease, covering his tracks really well. Built with structural integrity and style, he's another impressive representative of this consistent flush.



LOT 17 **QB M15** GENOMIC ENHANCED **3/4 SM 1/4 AN**

ASA# 4379318 | Homo Black Homo Polled | BD: 2/15/2024

SIRE CLRS GUARDIAN 317G
BCI STRUCTURE J111
BCI MS. C5102

DAM TJ MAIN EVENT 503B
QB MS K245
QB MS H055

BW	90
ADJ. WW	792
1/11 WT	1335
ADJ. YW	1592
ADJ. SC	36.5
WDA	4.06
ADG	5.05

% EPDS	CE	BW	WW	YW	ADG	MCE	MM	MWW	STAY
	8.2	2.5	98.7	144.6	0.29	3.5	24.4	73.9	17.3
	95	90	2	10	35	95	50	10	25

% EPDS	DOC	CW	YG	MARB	BF	REA	API	TI
	7.2	42.1	-0.19	0.52	-0.048	0.66	143.7	93.7
	95	25	60	30	45	55	35	15

Here's a standout 3/4 blood bull with tremendous depth of body and sheer power. He's stoutly constructed yet maintains a balanced and eye-appealing profile. Backed by a well-rounded EPD set, he combines phenotype with genetic potential. This year's first-calf heifer did an outstanding job, proving her value right out of the gate.



LOT 18 **QB M12** GENOMIC ENHANCED **PB SM**

ASA# 4379306 | Homo Black Homo Polled | BD: 2/10/2024

SIRE CLRS GUARDIAN 317G
BCI STRUCTURE J111
BCI MS. C5102

DAM LRS FALCON 442G
QB MS K232
KNH PLAY ON 458Z

BW	72
ADJ. WW	777
1/11 WT	1330
ADJ. YW	1586
ADJ. SC	36.2
WDA	3.98
ADG	5.09

% EPDS	CE	BW	WW	YW	ADG	MCE	MM	MWW	STAY
	15.2	-1.5	89.3	132.8	0.27	7.6	22.5	67.2	24.5
	10	10	15	20	35	25	55	30	1

% EPDS	DOC	CW	YG	MARB	BF	REA	API	TI
	8.8	31.3	-0.16	0.47	-0.026	0.6	179.9	96.9
	85	40	99	15	99	95	2	10

This bull is out of a first-calf heifer that traces back to the exceptional Z458 donor cow. Her daughters have consistently performed well in our herd, and this young cow is no exception. With a moderate 78-pound birth weight and an impressive 777-pound weaning weight, this calf showcases excellent maternal influence and growth potential. He's well-built, with a smooth shoulder and a strong, level top.



LOT 19 **QB M21** GENOMIC ENHANCED **PB SM**

ASA# 4379289 | Homo Black Homo Polled | BD: 2/19/2024

SIRE CLRS GUARDIAN 317G
BCI STRUCTURE J111
BCI MS. C5102

DAM SPRINGCREEK IRONSIDES 53G
QB MS K213
GQ MS G946

BW	90
ADJ. WW	768
1/11 WT	1140
ADJ. YW	1348
ADJ. SC	38.2
WDA	3.51
ADG	3.66

% EPDS	CE	BW	WW	YW	ADG	MCE	MM	MWW	STAY
	7.9	3	88.5	126.3	0.24	5.8	23.9	68.2	20.5
	90	85	20	30	55	55	45	25	5

% EPDS	DOC	CW	YG	MARB	BF	REA	API	TI
	10.4	39.9	-0.22	0.19	-0.029	0.87	138.1	83
	70	15	99	45	99	50	40	40

This is a really impressive calf out of a first-calf heifer, showcasing the consistent performance we've come to expect from Structure. Out of an Ironsides daughter, he combines excellent growth with outstanding structural integrity. He's well-balanced, wide-based, and built with the kind of strength and soundness that will serve any program well.



LOT 20 **QB M95** GENOMIC ENHANCED ◀
PB SM

ASA# 4379280 | Homo Black Homo Polled | BD: 2/18/2024

SIRE CLRS GUARDIAN 317G
BCI STRUCTURE J111
BCI MS. C5102

DAM SCHOOLEY STANDOUT 27G
QB MS K203
QB MS H015

BW	84
ADJ. WW	746
1/11 WT	1040
ADJ. YW	1208
ADJ. SC	33.4
WDA	3.19
ADG	2.92

CE	BW	WW	YW	ADG	MCE	MM	MWW	STAY
10.2	2.1	91.6	129.6	0.24	4.8	23.4	69.3	21.1
70	70	10	25	55	70	50	20	4

DOC	CW	YG	MARB	BF	REA	API	TI
10.4	48.3	-0.28	0.24	-0.06	0.92	147.7	87.7
70	5	90	40	85	40	25	25

Also out of a first-calf heifer, this bull weaned at an impressive 746 pounds. He brings good frame, size, and natural thickness to the table, with a clean front end and balanced proportions. Backed by seven EPDs ranking in the top 30% of the breed, he combines performance, structural soundness, and genetic value in one complete package.

LOT 22 **QB M33** GENOMIC ENHANCED ◀
PB SM

ASA# 4379247 | Homo Black Homo Polled | BD: 3/16/2024

SIRE CLRS GUARDIAN 317G
BCI STRUCTURE J111
BCI MS. C5102

DAM TJ GOLD 274G
QB MS J130
QB MS G933

BW	89
ADJ. WW	736
1/11 WT	1089
ADJ. YW	1346
ADJ. SC	34.6
WDA	3.64
ADG	3.84

CE	BW	WW	YW	ADG	MCE	MM	MWW	STAY
13.2	-1.6	83.1	113.5	0.19	6	24.8	66.4	23.6
30	10	30	60	90	50	40	30	1

DOC	CW	YG	MARB	BF	REA	API	TI
6	24.2	-0.22	0.58	-0.027	0.67	177.7	95.6
95	65	99	5	99	90	3	10

This is a truly complete calf backed by a dependable cow family. His dam, a second-calver, set the bar high by selling her first calf to Spruce Hill Ranch last year. This bull combines a well-balanced design, expressive muscle shape, and natural dimension. With 8 EPDs ranking in the top 30% and 5 in the top 10%.

LOT 21 **QB M74** GENOMIC ENHANCED ◀
PB SM

ASA# 4379315 | Homo Black Homo Polled | BD: 2/26/2024

SIRE CLRS GUARDIAN 317G
BCI STRUCTURE J111
BCI MS. C5102

DAM DCR MR BENCHMARK F113
QB MS K242
GQ MS G939

BW	80
ADJ. WW	742
1/11 WT	1190
ADJ. YW	1475
ADJ. SC	32.6
WDA	3.74
ADG	4.61

CE	BW	WW	YW	ADG	MCE	MM	MWW	STAY
10.5	-0.4	82.1	115	0.21	5.1	20.8	62	18.9
65	20	35	55	80	65	70	50	15

DOC	CW	YG	MARB	BF	REA	API	TI
8.7	32.5	-0.24	0.39	-0.037	0.75	152.7	88.3
85	35	95	20	99	80	20	25

This calf is backed by a deep and proven lineage of great genetics. With D662, Blueprint, and Benchmark in his pedigree, along with a notable great-granddam and great-grandsire, he represents generations of consistent performance. Sired by Structure and raised by a first-calf heifer, he's an impressive example of what these bloodlines can produce. This young dam did an outstanding job, delivering a calf with excellent structure, balance, and growth potential.



BCI **STRUCTURE J111**
SIRE OF LOTS 12-26

LOT 23 QB M23 GENOMIC ENHANCED PB SM

ASA# 4379264 | Homo Black Homo Polled | BD: 3/16/2024

SIRE: CLRS GUARDIAN 317G
BCI STRUCTURE J111
BCI MS. C5102

DAM: LRS ELEVATE 213B
GQ MS J151
GQ MS G946

BW	78
ADJ. WW	735
1/11 WT	1125
ADJ. YW	1404
ADJ. SC	34.6
WDA	3.76
ADG	4.21

EPDS	CE	BW	WW	YW	ADG	MCE	MM	MWW	STAY
	15.1	-2	74.4	100.4	0.16	8.4	25.9	63.1	18.5
%	15	10	65	85	99	15	30	45	20

EPDS	DOC	CW	YG	MARB	BF	REA	API	TI
	9	31	-0.2	0.26	-0.009	0.84	149.8	83.2
%	80	40	99	35	99	60	25	40

This mid-March calf comes from a productive second-calver who continues to deliver quality offspring. Weaning at over 700 pounds, he combines moderate birth traits with strong growth potential. With 5 EPDs ranking in the top 25%, he showcases balance, structural correctness, and an efficient design. A solid young bull ready to make an impact.

LOT 25 QB M55 GENOMIC ENHANCED PB SM

ASA# 4379172 | Hetero Black Homo Polled | BD: 2/27/2024

SIRE: CLRS GUARDIAN 317G
BCI STRUCTURE J111
BCI MS. C5102

DAM: DCR MR EXCLUSIVE E28
DCR MS EXCLUSIVE G17
DCR MS EL DORADO E334

BW	92
ADJ. WW	719
1/11 WT	1220
ADJ. YW	1434
ADJ. SC	36.6
WDA	3.85
ADG	4.49

EPDS	CE	BW	WW	YW	ADG	MCE	MM	MWW	STAY
	9.1	1.6	90.4	125	0.22	4.5	24.4	69.6	20.9
%	80	60	15	35	70	75	40	20	4

EPDS	DOC	CW	YG	MARB	BF	REA	API	TI
	11.2	35	-0.12	0.32	-0.031	0.47	149.5	88.6
%	60	25	99	25	99	99	25	25

This is well-designed calf out of a productive dam we purchased from Doll Simmentals a few years ago. She has consistently performed well for us. With a clean head, balanced structure, and eye appeal, he represents the quality and potential we've come to expect from this cow family.

LOT 24 QB M63 GENOMIC ENHANCED PB SM

ASA# 4379203 | Homo Black Homo Polled | BD: 3/12/2024

SIRE: CLRS GUARDIAN 317G
BCI STRUCTURE J111
BCI MS. C5102

DAM: DCR MR BENCHMARK F113
QB MS H018
QB C149 MS DESI

BW	84
ADJ. WW	718
1/11 WT	1070
ADJ. YW	1287
ADJ. SC	33.9
WDA	3.53
ADG	3.58

EPDS	CE	BW	WW	YW	ADG	MCE	MM	MWW	STAY
	12.6	-2.1	78.2	112.7	0.22	6.3	21	60.2	23.4
%	35	10	50	60	70	45	70	60	1

EPDS	DOC	CW	YG	MARB	BF	REA	API	TI
	11.4	28.6	-0.15	0.1	-0.018	0.6	149.7	80.7
%	55	50	99	65	99	95	25	50

This is a really well-put-together calf that checks all the boxes for performance and structure. He stems from a dependable Benchmark dam known for her productivity and consistency. With his balanced design and natural thickness, this bull is built to perform and contribute to any program.

LOT 26 QB M101 GENOMIC ENHANCED PB SM

ASA# 4379234 | Homo Black Homo Polled | BD: 3/11/2024

SIRE: CLRS GUARDIAN 317G
BCI STRUCTURE J111
BCI MS. C5102

DAM: DCR MR BENCHMARK F113
QB MS J109
KRJ B478

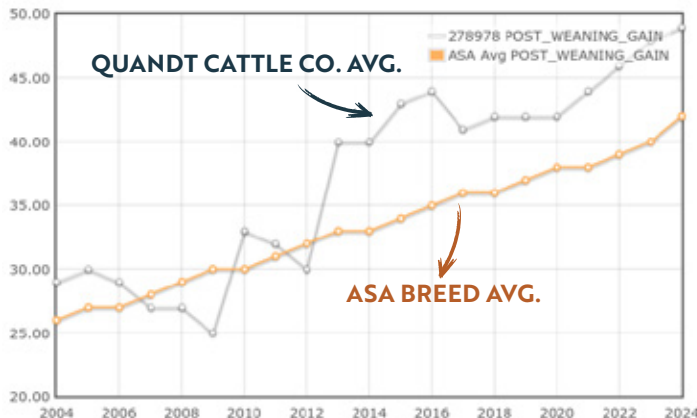
BW	79
ADJ. WW	697
1/11 WT	1090
ADJ. YW	1350
ADJ. SC	29.3
WDA	3.59
ADG	4.11

EPDS	CE	BW	WW	YW	ADG	MCE	MM	MWW	STAY
	14.8	-0.8	79.1	113.1	0.21	8.4	21.6	61.2	17.2
%	15	15	45	60	80	15	65	55	35

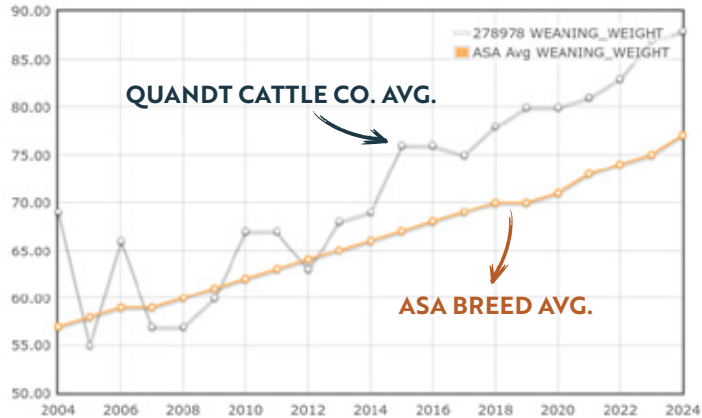
EPDS	DOC	CW	YG	MARB	BF	REA	API	TI
	8.5	32.6	-0.35	0.27	-0.057	0.93	148.8	85.4
%	85	35	70	35	85	40	25	35

This calf comes from an exceptional cow family, with the B478 donor as his granddam—a proven producer responsible for GQ Conoco and GQ Cornerstone. B478 daughters have consistently delivered year after year, and his dam continues the tradition, having sold a bull in last year's sale. This calf pairs a smooth, refined design with a very appealing calving ease profile.

GENETIC TREND IN POST WEANING GAIN



GENETIC TREND IN WEANING WEIGHT



LOT 27



LOT 27 **QB M27** GENOMIC ENHANCED **PB SM**

ASA# 4379103 | Homo Black Homo Polled | BD: 3/7/2024 | ET

SIRE SPRINGCREEK TESLA 6E
 SPRINGCREEK IRONSIDES 53G
 SPRINGCREEK LASS 3D

DAM KBHR CIMARRON F151
 KBHR MS CIMARRON K193
 KBHR SWEET SISTER H027

BW	99
ADJ. WW	764
1/11 WT	1282
ADJ. YW	1542
ADJ. SC	40.1
WDA	4.16
ADG	4.88

% EPDS	CE	BW	WW	YW	ADG	MCE	MM	MWW	STAY
	6.2	2.7	96.3	155.2	0.37	6.4	19.6	67.7	16.4
	99	80	5	3	2	45	80	25	45
% EPDS	DOC	CW	YG	MARB	BF	REA	API	TI	
	11.3	46.6	-0.38	0.36	-0.074	1.09	145.1	93.5	
	55	10	55	20	50	15	30	15	

THE POWER OF IRONSIDES.

The Ironsides group continues to impress year after year, and this bull is no exception. Leading off the group, he's out of our new donor cow purchased from Keller Simmentals two years ago. This calf is exceptionally well-built, with plenty of frame, natural growth, and impressive depth of body. Backed by a strong EPD profile with 9 traits in the top 30%, he's been a standout all year.



This will be one of the last calves from the great B714 donor, a cow that has left a lasting legacy by producing herd sires like QB Last Frontier (Hart Simmentals) and QB Voyager (Kenner Simmentals). This bull stands out with his exceptional frame, strong growth, and has consistently been one of the biggest calves all year. Structurally, he's well-built with a powerful hip, and plenty of eye appeal.

LOT 28 **QB M01** GENOMIC ENHANCED **PB SM**

ASA# 4379087 | Homo Black Homo Polled | BD: 2/29/2024 | ET

SIRE SPRINGCREEK TESLA 6E
 SPRINGCREEK IRONSIDES 53G
 SPRINGCREEK LASS 3D

DAM WCS MR LAST CALL 212Z
QB MS LAST CALL B714
 KS MISS ADVANCE Y714

BW	109
ADJ. WW	775
1/11 WT	1360
ADJ. YW	1623
ADJ. SC	36.7
WDA	4.32
ADG	5.31

EPDS	CE	BW	WW	YW	ADG	MCE	MM	MWW	STAY
%	7	4.8	87.8	141.7	0.34	5.9	23.4	67.2	15.6
%	95	99	20	10	10	50	50	30	50

EPDS	DOC	CW	YG	MARB	BF	REA	API	TI
%	12.5	47.4	-0.38	0.01	-0.069	1.13	118.2	77.7
%	40	10	55	85	70	10	80	60

LOT 30 **QB M54** GENOMIC ENHANCED **3/4 SM 1/4 AN**

ASA# 4379112 | Homo Black Scurred | BD: 3/4/2024

SIRE SPRINGCREEK TESLA 6E
 SPRINGCREEK IRONSIDES 53G
 SPRINGCREEK LASS 3D

DAM TSN PROTEGE Z896
TSN MISS PROTEGE S C762
 TSN MISS RETAIL T222

BW	110
ADJ. WW	850
1/11 WT	1450
ADJ. YW	1721
ADJ. SC	39.9
WDA	4.66
ADG	5.46

EPDS	CE	BW	WW	YW	ADG	MCE	MM	MWW	STAY
%	5.1	5.6	103.9	165.6	0.39	5.7	20.6	72.4	19.9
%	99	99	1	1	2	70	80	10	5

EPDS	DOC	CW	YG	MARB	BF	REA	API	TI
%	8.2	62.3	-0.21	0.41	-0.058	0.88	138	90.4
%	90	2	55	45	30	20	45	20

This calf is the tallest-framed bull in the pen and a true standout. Weaning at an impressive 850 pounds, he combines size and performance with 6 EPDs ranking in the top 10% of the breed. He's long-bodied, high-capacity, and carries a bold presence. If you're looking to add size, frame, and growth potential to your herd, this bull deserves a close look.

LOT 29 **QB M81** GENOMIC ENHANCED **PB SM**

ASA# 4379145 | Homo Black Homo Polled | BD: 3/8/2024 | ET

SIRE SPRINGCREEK TESLA 6E
 SPRINGCREEK IRONSIDES 53G
 SPRINGCREEK LASS 3D

DAM WCS MR LAST CALL 212Z
QB MS LAST CALL B714
 KS MISS ADVANCE Y714

BW	111
ADJ. WW	671
1/11 WT	1100
ADJ. YW	1318
ADJ. SC	35.1
WDA	3.58
ADG	4.06

EPDS	CE	BW	WW	YW	ADG	MCE	MM	MWW	STAY
%	5.1	6	83.4	132.2	0.3	4.7	23.4	65	17.3
%	99	99	30	20	20	75	50	40	30

EPDS	DOC	CW	YG	MARB	BF	REA	API	TI
%	14.1	40.2	-0.39	-0.05	-0.067	1.09	111.1	71.4
%	25	15	55	95	70	15	90	90

Pretty similar to his flush mate. Strong topped and a really well made and put together calf.

LOT 31 **QB M38** GENOMIC ENHANCED **PB SM**

ASA# 4379175 | Hetero Black Homo Polled | BD: 3/3/2024

SIRE SPRINGCREEK TESLA 6E
 SPRINGCREEK IRONSIDES 53G
 SPRINGCREEK LASS 3D

DAM WS PROCLAMATION E202
QB MS G905
 MS NLC TANKER Z2139

BW	95
ADJ. WW	740
1/11 WT	1285
ADJ. YW	1545
ADJ. SC	38.9
WDA	4.12
ADG	5.05

EPDS	CE	BW	WW	YW	ADG	MCE	MM	MWW	STAY
%	9.2	3.3	105.7	165.2	0.37	7.9	22.7	75.4	16
%	80	90	1	1	2	20	55	5	50

EPDS	DOC	CW	YG	MARB	BF	REA	API	TI
%	14.9	52.2	-0.26	0.26	-0.047	1	143.7	96
%	15	3	95	35	95	25	35	10

This Ironsides son has a lot to offer, backed by a proven and productive cow family. He's a well-rounded calf with no noticeable faults, showcasing soundness and completeness in his design. With a strong topline, clean structure, and balanced proportions.





LOT 32 **QB M57** GENOMIC ENHANCED **3/4 SM 1/8 AN 1/8 CS**

ASA# 4379129 | Homo Black Homo Polled | BD: 3/6/2024

SIRE SPRINGCREEK TESLA 6E
SPRINGCREEK IRONSIDES 53G
 SPRINGCREEK LASS 3D

DAM LRS UNLIMITED 752A
QB MS D625
 QB MISS A95

BW	110
ADJ. WW	719
1/11 WT	1220
ADJ. YW	1450
ADJ. SC	35
WDA	3.95
ADG	4.58

CE	BW	WW	YW	ADG	MCE	MM	MWW	STAY
3.6	6.2	93.7	148.8	0.34	4.5	22.4	69.2	17.1
% 99	% 99	5	5	10	85	65	20	25

DOC	CW	YG	MARB	BF	REA	API	TI
9.4	53.1	-0.35	0.13	-0.079	1.03	110.7	77.1
% 85	10	15	90	10	10	85	65

This is a really impressive 3/4 blood bull out of a highly productive cow who has raised four bulls in her lifetime, including one sold last year to the Holm family. This calf is exceptionally well put together, featuring a strong, level topline, plenty of length, and a balanced, eye-appealing profile. He's a structurally correct, growth-oriented bull with the kind of design that will add value to any operation.

LOT 35 **QB M92** GENOMIC ENHANCED **PB SM**

ASA# 4379157 | Homo Black Homo Polled | BD: 2/29/2024

SIRE SPRINGCREEK TESLA 6E
SPRINGCREEK IRONSIDES 53G
 SPRINGCREEK LASS 3D

DAM CCR FRONTIER 0053Z
QB F817
 ASR MS DESI Z2110

BW	99
ADJ. WW	721
1/11 WT	1045
ADJ. YW	1162
ADJ. SC	33.7
WDA	3.32
ADG	2.78

CE	BW	WW	YW	ADG	MCE	MM	MWW	STAY
5.5	4.2	96.5	150	0.33	5.2	17.7	65.9	12.5
% 99	% 95	5	4	10	65	90	35	85

DOC	CW	YG	MARB	BF	REA	API	TI
15.8	37.5	-0.48	-0.19	-0.089	1.17	102.9	77.8
% 10	20	15	99	30	10	99	60

This calf traces back to the proven Z211 donor, a cow that has consistently delivered quality offspring. Ranking in the top 10% for growth EPDs. F817 has raised five calves—three heifers that remain in the herd and two bulls.

LOT 34 **QB M90** GENOMIC ENHANCED **PB SM**

ASA# 4379208 | Homo Black Homo Polled | BD: 2/26/2024

SIRE SPRINGCREEK TESLA 6E
SPRINGCREEK IRONSIDES 53G
 SPRINGCREEK LASS 3D

DAM BRIDLE BIT EZ F800
QB MS H028
 QB F804

BW	77
ADJ. WW	731
1/11 WT	1200
ADJ. YW	1404
ADJ. SC	40.6
WDA	3.77
ADG	4.23

CE	BW	WW	YW	ADG	MCE	MM	MWW	STAY
17.9	-2.8	65.1	97	0.2	12.1	17.8	50.3	20
% 2	3	95	90	85	1	90	99	10

DOC	CW	YG	MARB	BF	REA	API	TI
8.8	23.6	-0.29	0.3	-0.048	0.72	158.4	80
% 85	65	90	30	95	85	15	55

This calf boasts a strong EPD profile, with 5 categories ranking in the top 10% of the breed. Notably, as an Ironsides son, he carries the lowest birth weight in the pen, making him an appealing choice for calving ease. His dam has been a reliable producer, raising three calves to date, with two already making their mark in previous sales.

LOT 36 **QB M14** GENOMIC ENHANCED **PB SM**

ASA# 4379191 | Homo Black Homo Polled | BD: 3/7/2024

SIRE SPRINGCREEK TESLA 6E
SPRINGCREEK IRONSIDES 53G
 SPRINGCREEK LASS 3D

DAM RBS BOISE B63
GQ MS G946
 TSN MISS TOP GRADE C880

BW	95
ADJ. WW	672
1/11 WT	1110
ADJ. YW	1325
ADJ. SC	39.1
WDA	3.6
ADG	4.1

CE	BW	WW	YW	ADG	MCE	MM	MWW	STAY
9.3	3.3	84.8	127	0.26	9.2	23.4	65.7	20
% 80	90	25	30	40	10	50	35	10

DOC	CW	YG	MARB	BF	REA	API	TI
7.8	31.7	-0.43	-0.06	-0.079	1.01	125.7	75.9
% 90	35	35	95	50	25	65	70

Wrapping up the Ironsides group is this solid and dependable calf. Last year, the Ironsides sire group made a strong impression, selling 10 bulls that averaged \$9,500. This calf's dam sold a bull in last year's sale to Jordan Geffre.

***33 IS AN OUT



LOT 37 **QB M20** GENOMIC ENHANCED **PB SM**

ASA# 4379268 | Homo Black Homo Polled | BD: 2/21/2024

SIRE MR SR HIGHLIFE G1609
DCR MR KOOPER K56
 DCR MISS ATTRACTION H119

DAM HART ASSULT 059G
QB MS J155
 QB MS D614

BW	95
ADJ. WW	932
1/11 WT	1425
ADJ. YW	1638
ADJ. SC	36.3
WDA	4.41
ADG	4.44

EPDS	CE	BW	WW	YW	ADG	MCE	MM	MWW	STAY
	10.9	5.3	114.9	181.9	0.42	6.2	32.4	89.7	13.5
%	60	99	1	1	1	45	3	1	75
EPDS	DOC	CW	YG	MARB	BF	REA	API	TI	
	10.6	76.5	-0.32	0.12	-0.099	1.07	134.1	97.3	
%	65	1	80	65	15	15	50	10	

This new sire group is off to an impressive start, and this bull leads the way as the highest weaning weight calf in the group. With 6 EPDs ranking in the top 1% of the breed. He's packed with natural thickness, length of body, and overall size, making him a standout for both performance and presence. A powerful bull.

RECEIVE \$100 SALE CREDIT
TOWARDS THIS YEAR'S SALE
 BY VIEWING THE BULLS IN PERSON PRIOR TO
SUNDAY, FEBRUARY 16.



LOT 38 **QB M35** GENOMIC ENHANCED **PB SM**

ASA# 4379237 | Homo Black Homo Polled | BD: 2/22/2024

SIRE MR SR HIGHLIFE G1609
DCR MR KOOPER K56
 DCR MISS ATTRACTION H119

DAM DCR MR BENCHMARK F113
QB MS J113
 QB MS D606

BW	78
ADJ. WW	773
1/11 WT	1030
ADJ. YW	1151
ADJ. SC	36.3
WDA	3.2
ADG	2.39

EPDS	CE	BW	WW	YW	ADG	MCE	MM	MWW	STAY
	16.7	-2.7	75.1	110.7	0.22	10	28.2	65.7	16.2
%	5	3	65	65	70	4	15	35	45
EPDS	DOC	CW	YG	MARB	BF	REA	API	TI	
	10.2	26.9	-0.36	0.29	-0.092	0.64	153.1	87	
%	70	55	65	30	15	95	20	30	

This calf boasts a moderate 81-pound birth weight and an impressive 773-pound weaning weight, backed by 8 EPDs ranking in the top 25% of the breed. His dam has proven herself early, raising two bulls in her first two years of production.



LOT 39 **QB M53** GENOMIC ENHANCED **PB SM**

ASA# 4379245 | Homo Black Homo Polled | BD: 2/22/2024

SIRE MR SR HIGHLIFE G1609
DCR MR KOOPER K56
 DCR MISS ATTRACTION H119

DAM TJ GOLD 274G
QB MS J127
 KNH PLAY ON 458Z

BW	96
ADJ. WW	733
1/11 WT	1310
ADJ. YW	1580
ADJ. SC	35.3
WDA	4.07
ADG	5.32

EPDS	CE	BW	WW	YW	ADG	MCE	MM	MWW	STAY
	12	3.4	99.3	162.5	0.39	6.8	23.9	73.5	15.9
%	45	90	3	1	1	35	45	10	50
EPDS	DOC	CW	YG	MARB	BF	REA	API	TI	
	11.7	54	-0.34	0.14	-0.097	0.88	140	90.6	
%	50	2	75	60	15	50	40	20	

The Kooper calves have proven to be excellent number adjusters while maintaining impressive growth. This calf is a prime example, weaning at 735 pounds and reaching a remarkable 1,580-pound yearling weight. Along with his performance, he boasts 6 EPDs in the top 15% of the breed.

This calf is backed by a tremendous cow family, with his granddam consistently raising standout calves over the past 10 years and has one in this year's sale. His dam, a second-calver, sold a bull in last year's sale to Daniel Muske, further proving her productivity. This bull brings plenty of performance, weaning at 806 pounds and finishing with an impressive 1,622-pound yearling weight.



LOT 40 **QB M102** GENOMIC ENHANCED **PB SM**

ASA# 4379263 | Homo Black Homo Polled | BD: 3/3/2024

SIRE MR SR HIGHLIFE G1609
DCR MR KOOPER K56
 DCR MISS ATTRACTION H119

DAM DCR MR BENCHMARK F113
GQ MS J150
 KSR CAMERYN 638C

BW	96
ADJ. WW	806
1/11 WT	1330
ADJ. YW	1622
ADJ. SC	36.9
WDA	4.26
ADG	5.13

EPDS	CE	BW	WW	YW	ADG	MCE	MM	MWW	STAY
	9.4	3.9	105.7	167.9	0.39	4.4	24.6	77.3	15.3
%	80	95	1	1	1	80	40	3	55
EPDS	DOC	CW	YG	MARB	BF	REA	API	TI	
	12.7	53.4	-0.33	0.06	-0.096	0.84	131.8	91.1	
%	40	3	80	75	15	60	55	20	

LOT 41 **QB M24** GENOMIC ENHANCED **PB SM**

ASA# 4379204 | Homo Black Homo Polled | BD: 3/16/2024

SIRE MR SR HIGHLIFE G1609
DCR MR KOOPER K56
 DCR MISS ATTRACTION H119

DAM QB BLUEPRINT D47
GQ MS H022
 TRAXS MISS PEND D662

BW	85
ADJ. WW	685
1/11 WT	1140
ADJ. YW	1419
ADJ. SC	33.1
WDA	3.81
ADG	4.61

EPDS	CE	BW	WW	YW	ADG	MCE	MM	MWW	STAY
	13.9	0.9	80.4	121.3	0.26	8.6	22	62.1	15.6
%	20	45	40	40	40	15	60	50	50
EPDS	DOC	CW	YG	MARB	BF	REA	API	TI	
	8.4	35.8	-0.42	0.27	-0.088	0.98	143.5	84.8	
%	85	25	40	35	30	30	35	35	

LOT 42 **QB M52** GENOMIC ENHANCED **PB SM**

ASA# 4379256 | Homo Black Homo Polled | BD: 3/1/2024

SIRE MR SR HIGHLIFE G1609
DCR MR KOOPER K56
 DCR MISS ATTRACTION H119

DAM SPRINGCREEK IRONSIDES 53G
QB MS J142
 KNH PLAY ON 458Z

BW	73
ADJ. WW	692
1/11 WT	1160
ADJ. YW	1413
ADJ. SC	34.8
WDA	3.69
ADG	4.54

EPDS	CE	BW	WW	YW	ADG	MCE	MM	MWW	STAY
	16.7	-0.4	79.2	123.1	0.27	11.5	23.8	63.3	23.4
%	5	20	45	35	35	1	45	45	1
EPDS	DOC	CW	YG	MARB	BF	REA	API	TI	
	12.8	38.9	-0.26	0.39	-0.057	0.73	170.9	88.6	
%	35	20	95	20	85	80	5	25	

This is a solid calving ease bull out of a proven Z458 daughter. Backed by 8 EPDs in the top 25%, he combines genetic merit with practical functionality. Raised by a productive second-calver, this calf displays structural soundness, a smooth front end, and balanced proportions.

LOT 43 **QB M82** GENOMIC ENHANCED **PB SM**

ASA# 4379229 | Homo Black Homo Polled | BD: 2/25/2024

SIRE MR SR HIGHLIFE G1609
DCR MR KOOPER K56
 DCR MISS ATTRACTION H119

DAM KBHR CIMARRON F151
GQ MS J100
 GQ MS G945

BW	78
ADJ. WW	675
1/11 WT	1100
ADJ. YW	1312
ADJ. SC	32.5
WDA	3.45
ADG	4.01

EPDS	CE	BW	WW	YW	ADG	MCE	MM	MWW	STAY
	18.1	-2	72.6	113.4	0.26	11.5	23.4	59.6	22
%	2	10	75	60	40	1	50	60	2
EPDS	DOC	CW	YG	MARB	BF	REA	API	TI	
	9.7	33.2	-0.32	0.4	-0.075	0.73	171.2	87.3	
%	75	30	80	20	50	80	5	25	

Here's a well-designed heifer bull that checks all the boxes for calving ease. He ranks in the top 10% of the breed for CE, BW, and MCE, making him an excellent choice for breeding heifers.



This is a very complete calf out of a productive D662 daughter, showcasing strong maternal backing and excellent maternal EPDs. Structurally, he's put together correctly with a strong top, and a balanced frame. With a moderate 85-pound birth weight and an impressive 1,419-pound yearling weight, this bull combines calving ease, growth, and structural integrity to make a well-rounded bull.

LOT 45



LOT 44 **QB M19** GENOMIC ENHANCED **PB SM**

ASA# 4379187 | Hetero Black Homo Polled | BD: 3/25/2024

SIRE HSR POWER PLUS D206
HART ASSULT 059G
HART MISS 024D
DAM HOOK'S BEACON 56B
QB MS G933
DKSR MS GLADIATOR E151

BW	93
ADJ. WW	882
1/11 WT	1340
ADJ. YW	1673
ADJ. SC	42.1
WDA	4.62
ADG	4.96

% EPDS	CE	BW	WW	YW	ADG	MCE	MM	MWW	STAY
	9.2	2.6	90.1	144.4	0.34	5.2	35.3	80.2	16.6
	80	80	15	10	10	65	1	2	40

% EPDS	DOC	CW	YG	MARB	BF	REA	API	TI
	8.8	36.1	-0.22	0.34	-0.037	0.76	145	90.7
	85	25	99	25	99	75	30	20

This will be the final year for Assault calves, and what a way to close it out with this solid set. This bull comes from a highly productive cow whose track record speaks for itself—3 out of her first 4 calves have sold in the sale, including one to Colby Olson last year. She consistently stamps her calves with exceptional length, frame, and style, and this calf is no exception.

LOT 45 **QB M56** GENOMIC ENHANCED **PB SM**

ASA# 4379205 | Homo Black Homo Polled | BD: 2/29/2024

SIRE HSR POWER PLUS D206
HART ASSULT 059G
HART MISS 024D
DAM BRIDLE BIT EZ F800
QB MS H023
GQ F843

BW	86
ADJ. WW	756
1/11 WT	1275
ADJ. YW	1515
ADJ. SC	38.2
WDA	4.05
ADG	4.77

% EPDS	CE	BW	WW	YW	ADG	MCE	MM	MWW	STAY
	14.6	3.1	94.5	147.2	0.33	8.3	27.7	74.9	13.3
	15	90	10	10	10	15	20	10	75

% EPDS	DOC	CW	YG	MARB	BF	REA	API	TI
	11.3	60.2	-0.3	-0.05	-0.064	1.08	123.8	82.9
	55	1	85	95	70	15	70	40

This is an extremely thick, strong-topped calf that combines power and performance. With 8 EPDs ranking in the top 15% of the breed, he brings both genetic value and eye appeal. Weaning off at 756 pounds and finishing with a 1,515-pound yearling weight.

POWER & PERFORMANCE.

LOT 46 **QB M89** GENOMIC ENHANCED 3/4 SM 1/4 AN

ASA# 4379197 | Hetero Black Homo Polled | BD: 3/20/2024

HSR POWER PLUS D206
SIRE HART ASSULT 059G
 HART MISS 024D

DCR MR BENCHMARK F113
DAM QB MS H004
 PRAIRIE PRIDE GYPSY GAL 3010

BW	110
ADJ. WW	758
1/11 WT	1285
ADJ. YW	1597
ADJ. SC	41.8
WDA	4.36
ADG	5.28

EPDS	CE	BW	WW	YW	ADG	MCE	MM	MWW	STAY
	3.5	9.3	99.9	159.9	0.38	2.7	32.9	83	14.9
%	99	99	2	2	3	99	3	1	50
EPDS	DOC	CW	YG	MARB	BF	REA	API	TI	
	12.3	75.9	-0.19	0.09	-0.05	1.04	100.3	76.4	
%	55	1	60	95	45	10	95	70	

This high-growth bull is a standout, ranking in the top 3% of the breed for WW, YW, and ADG. He's tall, long-made, and carries a strong performance profile. Born at the end of March, he's developed exceptionally well. His dam has a proven track record, with her first three calves all making it into the sale.

LOT 48 **QB M97** GENOMIC ENHANCED PB SM

ASA# 4379155 | Homo Black Homo Polled | BD: 4/10/2024

HSR POWER PLUS D206
SIRE HART ASSULT 059G
 HART MISS 024D

LRS GRADE BREAK 114B
DAM QB F809
 KNH PLAY ON 458Z

BW	90
ADJ. WW	681
1/11 WT	1080
ADJ. YW	1407
ADJ. SC	35.9
WDA	3.94
ADG	4.56

EPDS	CE	BW	WW	YW	ADG	MCE	MM	MWW	STAY
	10.5	1.1	72.2	120.7	0.3	7.2	25.1	61.1	13.1
%	65	50	75	40	20	30	35	55	80
EPDS	DOC	CW	YG	MARB	BF	REA	API	TI	
	10.5	36.3	-0.19	0.22	-0.062	0.46	128.7	77.8	
%	65	25	99	40	70	99	60	60	

For being an April 10 calf, this bull has done an impressive job catching up with the group. Posting a 1,400-pound yearling weight, he stands out for his stout build and natural thickness. He's out of a productive Z458 x Grade Break daughter.

LOT 47 **QB M87** GENOMIC ENHANCED PB SM

ASA# 4379149 | Hetero Black Homo Polled | BD: 3/24/2024

HSR POWER PLUS D206
SIRE HART ASSULT 059G
 HART MISS 024D

LRS WISER 1534C
DAM QB MS E787
 QB C112 MS DESI

BW	110
ADJ. WW	726
1/11 WT	1225
ADJ. YW	1530
ADJ. SC	34
WDA	4.21
ADG	5.05

EPDS	CE	BW	WW	YW	ADG	MCE	MM	MWW	STAY
	1	7.7	104	169.2	0.41	1.7	27.1	79	15.5
%	99	99	1	1	1	99	20	2	55
EPDS	DOC	CW	YG	MARB	BF	REA	API	TI	
	11.4	58.9	-0.34	0	-0.083	1.06	110.8	82.7	
%	55	1	75	90	30	15	90	45	

This bull's dam has proven herself as a reliable producer, selling three bulls through the sale over the years and consistently raising high-quality replacement daughters. Her calf last year sold to Daniel Barton. This year's calf brings plenty of frame and growth.

LOT 49 **QB M49** GENOMIC ENHANCED PB SM

ASA# 4379118 | Homo Black Homo Polled | BD: 2/27/2024 | Twin

HSR POWER PLUS D206
SIRE HART ASSULT 059G
 HART MISS 024D

CARD UPROAR 49Y
DAM TSN MISS UPROAR C895
 TSN MISS FOCUS U688

BW	74
ADJ. WW	644
1/11 WT	1270
ADJ. YW	1523
ADJ. SC	37.6
WDA	4.01
ADG	5.52

EPDS	CE	BW	WW	YW	ADG	MCE	MM	MWW	STAY
	7.5	6.2	96.3	154.6	0.36	4.8	31.3	79.4	11.9
%	95	99	5	3	3	70	5	2	90
EPDS	DOC	CW	YG	MARB	BF	REA	API	TI	
	9.9	60.4	-0.28	0.19	-0.056	1.1	121.2	85.9	
%	75	1	90	45	85	15	75	30	

This calf is backed by a highly productive cow that has placed six bulls in the sale over the years, including one sold to Renny Tank last year. She consistently stamps her calves with a powerful hip, balanced structure, and excellent eye appeal.



A NOTE FROM FROM OUR NUTRITIONIST

What are your priorities? This is where we always start with developing a set of bulls. When Jason answered this question the first thing he said was to "keep them sound". These cattle have consumed a diet that focused on utilizing high-quality roughages to assemble a palatable and uniform diet. The micronutrient needs of these cattle focus on the importance of maintaining general health, fertility and foot quality. Genetically, you are familiar with the ability of these cattle to grow and gain. While we have been blessed with a mostly moderate fall and winter, the bulls have converted their limited energy diet into some impressive gains – a reflection of their ability! When you buy a bull here, be comfortable that they have been professionally developed and are ready to go to work for you.

- Tyler Melroe, M.S.
 Consulting Nutritionist



The only baldy bull in the sale and the start of an exciting new sire group. This calf is part of the first set of Pride of Eagle calves, which have impressed us this year. He comes from one of the top-producing dams in the herd, the same cow that raised QB Quantify, purchased by TNT Simmentals two years ago. This calf has been a standout all year.

LOT 50 **QB M26** GENOMIC ENHANCED **PB SM**
 ASA# 4379147 | Homo Black Homo Polled | BD: 3/6/2024

SIRE HOOK'S EAGLE 6E
TNT PRIDE OF EAGLE K463
 TNT MISS F567

DAM LRS GRADE BREAK 114B
QB MS E781
 HSR MS TORNADO B807

BW	107
ADJ. WW	799
1/11 WT	1345
ADJ. YW	1601
ADJ. SC	39.5
WDA	4.35
ADG	5.03

CE	BW	WW	YW	ADG	MCE	MM	MWW	STAY	
6.8	6.8	113.6	178.4	0.4	2.6	23.5	80.2	17.7	
% EPDS	95	99	1	1	1	95	50	2	25

DOC	CW	YG	MARB	BF	REA	API	TI	
13.8	60.3	-0.38	0.21	-0.075	1.26	139	95.7	
% EPDS	25	1	55	45	50	3	40	10

LOT 51 **QB M62** GENOMIC ENHANCED **PB SM**
 ASA# 4379140 | Homo Black Homo Polled | BD: 3/22/2024

SIRE HOOK'S EAGLE 6E
TNT PRIDE OF EAGLE K463
 TNT MISS F567

DAM LRS TURNING POINT 3117A
GQ MS E744
 KRJ B478

BW	92
ADJ. WW	717
1/11 WT	1295
ADJ. YW	1633
ADJ. SC	37.9
WDA	4.42
ADG	5.74

CE	BW	WW	YW	ADG	MCE	MM	MWW	STAY	
11.5	1.9	99.8	158.7	0.37	6.6	24.8	74.6	17.9	
% EPDS	50	65	3	2	2	40	40	10	25

DOC	CW	YG	MARB	BF	REA	API	TI	
15.5	62	-0.54	0.08	-0.096	1.61	143	91.8	
% EPDS	15	1	3	70	15	1	35	15

This calf comes from the outstanding E744 cow, known for producing GQ Advantage, which sold to Sys Simmentals a few years ago. She also raised a calf that sold to Tracy Burgod in last year's sale. This bull has really hit his stride over the past couple of months, finishing with an impressive 1,600+ pound yearling weight. He's a strong, well-structured calf with balanced proportions, natural thickness, and a standout EPD profile featuring 10 traits in the top 15% of the breed.



LOT 52 **QB M06** GENOMIC ENHANCED **PB SM**

ASA# 4379226 | Homo Black Homo Polled | BD: 4/1/2024

SIRE HOOK'S EAGLE 6E
TNT PRIDE OF EAGLE K463
TNT MISS F567

DAM LFE THE RIDDLER 323B
GQ MS H064
TRAXS MISS PEND D662

BW	82
ADJ. WW	743
1/11 WT	1205
ADJ. YW	1568
ADJ. SC	42.5
WDA	4.26
ADG	5.19

EPDS	CE	BW	WW	YW	ADG	MCE	MM	MWW	STAY
	14.9	1.2	98.1	156	0.36	8.4	22.3	71.3	16.2
%	15	50	4	2	3	15	60	15	45

EPDS	DOC	CW	YG	MARB	BF	REA	API	TI
	14.8	56.1	-0.34	0.11	-0.043	1.32	145.2	91.6
%	20	2	75	65	95	2	30	15

This April 1st calf is out of one of the top-performing D662 daughters, who raised QB Bowflex, sold to Kaelberer Simmental last year. He's a well-balanced bull with a strong combination of growth and calving ease.. Weaning at 743 pounds and finishing with a 1,568-pound yearling weight.



LOT 52

LOT 53 **QB M50** GENOMIC ENHANCED **PB SM**

ASA# 4379214 | Homo Black Homo Polled | BD: 3/28/2024

SIRE HOOK'S EAGLE 6E
TNT PRIDE OF EAGLE K463
TNT MISS F567

DAM COLORADO BRIDLE BIT E752
QB MS H041
KNH PLAY ON 458Z

BW	87
ADJ. WW	855
1/11 WT	1210
ADJ. YW	1514
ADJ. SC	37.2
WDA	4.22
ADG	4.15

EPDS	CE	BW	WW	YW	ADG	MCE	MM	MWW	STAY
	15.1	-1	87.6	136.5	0.31	7.6	27.1	70.8	17.9
%	15	15	20	15	15	25	20	15	25

EPDS	DOC	CW	YG	MARB	BF	REA	API	TI
	16.3	40.7	-0.26	0.25	-0.063	0.72	155.2	91.3
%	10	15	95	35	70	85	20	15

This bull is out of a productive Colorado daughter and offers an excellent combination of calving ease and growth potential. Weaning at 855 pounds and finishing with a 1,514-pound yearling weight. Structurally correct and well-balanced, this slightly younger bull checks a lot of the boxes.



LOT 53

LOT 54 **QB M78** GENOMIC ENHANCED **PB SM**

ASA# 4379194 | Homo Black Homo Polled | BD: 3/24/2024

SIRE HOOK'S EAGLE 6E
TNT PRIDE OF EAGLE K463
TNT MISS F567

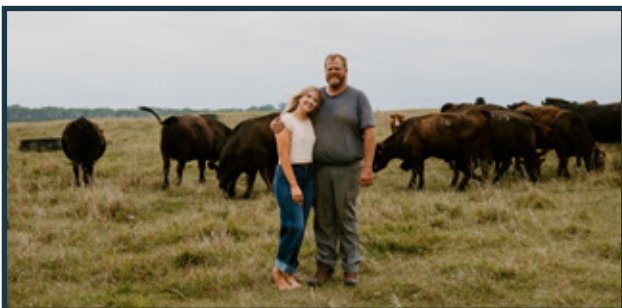
DAM RBS BOISE B63
QB G963
QB MS E786

BW	98
ADJ. WW	742
1/11 WT	1255
ADJ. YW	1580
ADJ. SC	41
WDA	4.31
ADG	5.26

EPDS	CE	BW	WW	YW	ADG	MCE	MM	MWW	STAY
	10.5	4	98.1	151.5	0.33	5.7	25.1	74.1	18.2
%	65	95	4	4	10	55	35	10	20

EPDS	DOC	CW	YG	MARB	BF	REA	API	TI
	14.8	50.8	-0.43	0.1	-0.067	1.35	137.6	87.8
%	20	4	35	65	70	1	40	25

This bull comes from a reliable cow that has placed bulls in the last three sales, including one sold to Cody Gentzkow last year. As an end-of-March calf, he has shown impressive growth and development, catching up with the group quickly.



LOT 54

LOT 55 **QB M37** GENOMIC ENHANCED **PB SM**

ASA# 4379215 | Homo Black Homo Polled | BD: 2/24/2024

SIRE HOOK'S EAGLE 6E
TNT PRIDE OF EAGLE K463
TNT MISS F567

DAM COLORADO BRIDLE BIT E752
QB MS H042
KNH PLAY ON 458Z

BW	79
ADJ. WW	701
1/11 WT	1240
ADJ. YW	1467
ADJ. SC	37.4
WDA	3.88
ADG	4.81

EPDS	CE	BW	WW	YW	ADG	MCE	MM	MWW	STAY
	18.8	-1.9	83.1	129.9	0.29	10	26.5	68	21.3
%	1	10	30	25	25	4	25	25	3

EPDS	DOC	CW	YG	MARB	BF	REA	API	TI
	15.7	46.3	-0.27	0.29	-0.048	0.96	168.8	91
%	10	10	95	30	95	35	10	20

This is a strong Pride calf out of a productive Z458 daughter. He's a reliable calving ease prospect with 12 EPDs ranking in the top 25% of the breed. His dam has proven her consistency, selling a calf in last year's sale that performed well and raising another bull the year before.



LOT 56

LOT 56 **QB M48** GENOMIC ENHANCED 3/4 SM 1/4 AN

ASA# 4379255 | Homo Black Homo Polled | BD: 2/26/2024

SIRE BCLR MANIFESTO G352
KS CREED K258
 SRF MISS 940G

DAM TNT UNION D385
QB MS J141
 QB MS G901

BW	91
ADJ. WW	799
1/11 WT	1200
ADJ. YW	1393
ADJ. SC	34.1
WDA	3.77
ADG	3.75

EPDS	CE	BW	WW	YW	ADG	MCE	MM	MWW	STAY
12.2	1.8	97.7	148.9	0.32	6	23.7	72.4	19.9	
%	60	85	3	5	20	65	55	10	5
EPDS	DOC	CW	YG	MARB	BF	REA	API	TI	
16	32.7	-0.19	0.31	-0.033	0.65	144.8	89.8		
%	15	50	60	60	55	60	35	20	

This is part of our first set of Creed calves, sired by a bull we purchased from Kenner Simmentals. This calf stands out with his deep middle, strong capacity, and balanced design. Weaning just under 800 pounds. A great start for this promising sire group.



LOT 57

LOT 57 **QB M61** GENOMIC ENHANCED PB SM

ASA# 4379240 | Homo Black Homo Polled | BD: 2/29/2024

SIRE BCLR MANIFESTO G352
KS CREED K258
 SRF MISS 940G

DAM DCR MR BENCHMARK F113
QB MS J119
 QB MS E787

BW	80
ADJ. WW	745
1/11 WT	1135
ADJ. YW	1347
ADJ. SC	37.7
WDA	3.6
ADG	3.8

EPDS	CE	BW	WW	YW	ADG	MCE	MM	MWW	STAY
13.7	1.8	89.4	129.1	0.25	8	24.9	69.4	22.2	
%	25	65	15	25	50	20	35	20	2
EPDS	DOC	CW	YG	MARB	BF	REA	API	TI	
14.9	25.9	-0.23	0.38	-0.048	0.55	162.5	91		
%	15	60	99	20	95	99	10	20	

This bull comes from a productive second-calver who sold her first calf in last year's sale to the Schroeder family, where he was a standout. Backed by 10 EPDs in the top 25% of the breed, this calf combines genetic merit with structural correctness.

JOIN US AT OUR SALE FACILITY



1 MILE WEST OF OAKES, ND
 10861 88th St. SE, Oakes, ND 58474

LOT 58 **QB M16** GENOMIC ENHANCED PB SM

ASA# 4379267 | Homo Black Homo Polled | BD: 3/8/2024

SIRE BCLR MANIFESTO G352
KS CREED K258
 SRF MISS 940G

DAM TRAXS ELEVATE F08
QB MS J154
 QB MS G930

BW	81
ADJ. WW	758
1/11 WT	1240
ADJ. YW	1530
ADJ. SC	38.1
WDA	4.04
ADG	4.86

EPDS	CE	BW	WW	YW	ADG	MCE	MM	MWW	STAY
11.7	1	81.8	121.7	0.25	7.2	26.3	67.1	19	
%	50	45	35	40	50	30	25	30	15
EPDS	DOC	CW	YG	MARB	BF	REA	API	TI	
14.1	40.5	-0.35	0.36	-0.072	0.92	152.3	87.5		
%	25	15	70	20	50	40	20	25	

This calf combines a low 84-pound birth weight with impressive growth, finishing with a 1,530-pound yearling weight. He's a long-sided, smooth-moving bull with excellent structure and balance.

LOT 59 **QB M18** GENOMIC ENHANCED **PB SM**

ASA# 4379072 | Homo Black Homo Polled | BD: 3/25/2024

W/C EXECUTIVE ORDER 8543B

SIRE HL/EKRD SLOW BURN 15K
HS COOL BURN C16X

DAM TNT FINAL CHOICE W210
KSR CAMERYN 638C
KSR KERA 328Z

BW	92
ADJ. WW	715
1/11 WT	1215
ADJ. YW	1532
ADJ. SC	38.1
WDA	4.19
ADG	5.12

CE	BW	WW	YW	ADG	MCE	MM	MWW	STAY
9.4	4	82.6	131.9	0.31	3.8	18.6	59.8	11.6
80	95	35	20	15	85	85	60	90

DOC	CW	YG	MARB	BF	REA	API	TI
15.4	20.6	-0.43	0.12	-0.089	0.78	118.4	78.3
15	80	35	65	30	70	80	60

This end-of-March calf comes from the outstanding C638 dam, a proven producer who has raised six bulls throughout her lifetime. Her track record includes GQ Highmark, sold to G&D Simmentals a few years ago. A solid bull backed by a consistent and productive cow family.



LOT 60 **QB M103** GENOMIC ENHANCED **PB SM**

ASA# 4379150 | Homo Black Homo Polled | BD: 3/29/2024

W/C EXECUTIVE ORDER 8543B

SIRE HL/EKRD SLOW BURN 15K
HS COOL BURN C16X

DAM LRS ELEVATE 213B
QB MS E788
QB C134 MS OLIE

BW	109
ADJ. WW	704
1/11 WT	1080
ADJ. YW	1346
ADJ. SC	36.3
WDA	3.78
ADG	4.03

CE	BW	WW	YW	ADG	MCE	MM	MWW	STAY
9.9	2.9	77.2	120.8	0.27	3.6	20.1	58.6	11.8
75	85	55	40	35	90	75	65	90

DOC	CW	YG	MARB	BF	REA	API	TI
13	31.9	-0.42	0.33	-0.088	0.91	130	81.5
35	35	40	25	30	45	55	45

Another end-of-March calf that stands out with a weaning weight over 700 pounds. This is a really complete bull with balanced structure, natural thickness, and eye appeal.

LOT 61 **QB M98** GENOMIC ENHANCED **3/4 SM 1/4 AN**

ASA# 4379128 | Homo Black Homo Polled | BD: 4/4/2024

W/C EXECUTIVE ORDER 8543B

SIRE HL/EKRD SLOW BURN 15K
HS COOL BURN C16X

DAM LRS GRADE BREAK 114B
QB MS D624
QB MISS A88

BW	101
ADJ. WW	753
1/11 WT	1130
ADJ. YW	1423
ADJ. SC	36.6
WDA	4.04
ADG	4.21

CE	BW	WW	YW	ADG	MCE	MM	MWW	STAY
7.8	2.5	78.6	125.9	0.3	3.9	18.1	57.5	12.7
95	90	40	35	30	95	95	75	75

DOC	CW	YG	MARB	BF	REA	API	TI
11.5	38.3	-0.24	0.36	-0.057	0.68	120	78
65	35	45	55	30	50	75	65

This April 4th calf has developed exceptionally well and showcases solid growth and performance. His dam is a proven producer, having sold a standout bull in last year's sale to Mike Wolff.

LOT 62 **QB M76** GENOMIC ENHANCED **PB SM**

ASA# 4379227 | Homo Black Homo Polled | BD: 3/10/2024

W/C EXECUTIVE ORDER 8543B

SIRE HL/EKRD SLOW BURN 15K
HS COOL BURN C16X

DAM CLRS DIVIDEND 405D
QB MS H066
QB F819

BW	96
ADJ. WW	652
1/11 WT	1130
ADJ. YW	1389
ADJ. SC	37.3
WDA	3.7
ADG	4.63

CE	BW	WW	YW	ADG	MCE	MM	MWW	STAY
6.2	1.8	73.6	116.6	0.27	1.6	17	53.7	10.9
99	65	70	50	35	99	95	90	95

DOC	CW	YG	MARB	BF	REA	API	TI
12.7	29.6	-0.42	0.14	-0.093	0.84	113.8	74.9
40	45	40	60	15	60	85	75

This homozygous black, homozygous polled calf brings dependable genetics and a strong maternal foundation. His dam has shown her productivity, having sold a bull to Scott Braun in last year's sale.

LOT 63 **QB M93** GENOMIC ENHANCED **PB SM**

ASA# 4379143 | Homo Black Hetero Polled | BD: 3/23/2024

W/C EXECUTIVE ORDER 8543B

SIRE HL/EKRD SLOW BURN 15K
HS COOL BURN C16X

DAM COME AS U R RED ROCKET
QB MS E771
MS NLC TANKER Z2139

BW	89
ADJ. WW	683
1/11 WT	1030
ADJ. YW	1263
ADJ. SC	38
WDA	3.53
ADG	3.64

CE	BW	WW	YW	ADG	MCE	MM	MWW	STAY
8.2	3.1	82.1	126.5	0.28	3.1	19.6	60.6	9.9
90	90	35	30	30	95	80	60	99

DOC	CW	YG	MARB	BF	REA	API	TI
15.1	29.2	-0.44	0.15	-0.1	0.85	115.4	79.3
15	45	30	55	15	55	85	55

This is a very well-designed calf, showcasing a clean build. He's balanced and structurally correct.

LOT 64



LOT 64 **QB M25** GENOMIC ENHANCED **PB SM**
 ASA# 4379164 | Homo Black Homo Polled | BD: 3/26/2024
 W/C EXECUTIVE ORDER 8543B
SIRE HL/EKRD SLOW BURN 15K
 HS COOL BURN C16X
 LRS GRADE BREAK 114B
DAM **GQ F845**
 TSN MISS ANSWER C365

BW	75
ADJ. WW	655
1/11 WT	1130
ADJ. YW	1423
ADJ. SC	38.1
WDA	3.91
ADG	4.82

EPDS	CE	BW	WW	YW	ADG	MCE	MM	MWW	STAY
	15.6	-1.3	71.1	114.1	0.27	7.8	16	51.5	17.9
%	10	15	80	55	35	20	95	95	25
EPDS	DOC	CW	YG	MARB	BF	REA	API	TI	
	11.7	21.9	-0.24	0.35	-0.045	0.56	155.5	83.1	
%	50	75	95	25	95	99	20	40	

This end-of-March calf stands out with strong calving ease attributes. He moves with ease, covering his tracks well, and brings plenty of eye appeal with his balanced design and clean profile.

LOT 65 **QB M11** GENOMIC ENHANCED **PB SM**
 ASA# 4379327 | Homo Black Homo Polled | BD: 2/11/2024
 HOOK'S ENCORE 65E
SIRE BRIDLE BIT RESOURCE G9117
 BRIDLE BIT MISS B452
 LRS FALCON 442G
DAM **QB MS K257**
 KNH PLAY ON 458Z

BW	72
ADJ. WW	726
1/11 WT	1170
ADJ. YW	1379
ADJ. SC	36.2
WDA	3.51
ADG	4.12

EPDS	CE	BW	WW	YW	ADG	MCE	MM	MWW	STAY
	15.3	0.3	89.8	148.3	0.37	9.2	26.4	71.2	16.6
%	10	35	15	5	2	10	25	15	40
EPDS	DOC	CW	YG	MARB	BF	REA	API	TI	
	17	62.3	-0.39	0.2	-0.08	1.28	151.1	91	
%	5	1	55	45	50	2	25	20	

The only Resource calf in the pen, this bull is out of a first-calf heifer backed by a productive Z458 daughter. With 13 EPDs in the top 25%, he offers an impressive genetic profile and is a strong calving ease prospect. He's well-balanced, smooth-made.

CALVING EASE STANDOUTS.

Kicking off the reds is this standout from the Clyde sire group, which has performed exceptionally well for us. Weaning at just over 800 pounds, this bull demonstrates excellent growth potential and performance. He's out of a dependable red cow we purchased from G&D Simmentals a few years ago, who raised a bull sold to Mark Wagner in last year's sale.



LOT 66 **QB M17** GENOMIC ENHANCED **PB SM**
 ASA# 4379071 | Red Non-Diluter Homo Polled | BD: 3/3/2024

SIRE SBSF EASTWOOD 22E
SPRINGCREEK CLYDE 93H
 SWAN LAKE GRACE 15 C

DAM KR MR E51
MISS GD H061
 DCR MS RED ZONE F151

BW	85
ADJ. WW	819
1/11 WT	1270
ADJ. YW	1507
ADJ. SC	38.4
WDA	4.07
ADG	4.31

EPDS	CE	BW	WW	YW	ADG	MCE	MM	MWW	STAY
	12	0	78.8	107.9	0.18	7.9	33.5	72.9	18.7
%	45	30	50	70	95	20	2	10	15

EPDS	DOC	CW	YG	MARB	BF	REA	API	TI
	10.7	24.5	-0.38	-0.01	-0.066	0.88	130.4	77.9
%	65	65	55	90	70	50	55	60

LOT 67 **QB M22** GENOMIC ENHANCED **PB SM**
 ASA# 4379138 | Red Non-Diluter Homo Polled | BD: 3/8/2024

SIRE SBSF EASTWOOD 22E
SPRINGCREEK CLYDE 93H
 SWAN LAKE GRACE 15 C

DAM IPU RED ZONE 82Y
DKSR MS RED ZONE E37
 DKSR MS EXCEL Y421

BW	94
ADJ. WW	802
1/11 WT	1180
ADJ. YW	1371
ADJ. SC	38.1
WDA	3.84
ADG	3.56

EPDS	CE	BW	WW	YW	ADG	MCE	MM	MWW	STAY
	7.7	3.2	91.2	132.4	0.26	6.6	31.3	76.8	21.1
%	90	90	15	20	40	40	5	4	4

EPDS	DOC	CW	YG	MARB	BF	REA	API	TI
	10.2	29.5	-0.54	0.1	-0.118	1.03	137.2	84.6
%	70	45	3	65	2	20	45	35



This bull comes from the highly consistent E37 cow, weaning at an impressive 800 pounds. Much like his brothers who have been featured in previous sales, he carries the same reliable quality and performance. E37 has raised five calves, all of which have made the sale, and this one might just be her best yet.

LOT 68 **QB M04** GENOMIC ENHANCED **PB SM**

ASA# 4379218 | Red Non-Diluter Homo Polled | BD: 3/14/2024

SIRE SBSF EASTWOOD 22E
SPRINGCREEK CLYDE 93H
SWAN LAKE GRACE 15 C

DAM TRAX RED RIVER E84
QB MS H048
KBHR D211

BW	92
ADJ. WW	785
1/11 WT	1245
ADJ. YW	1528
ADJ. SC	40.5
WDA	4.14
ADG	4.67

% EPDS	CE	BW	WW	YW	ADG	MCE	MM	MWW	STAY
	5.6	3.6	94.8	146.8	0.32	5.7	26.4	73.7	15.1
	99	95	10	10	10	55	25	10	60
% EPDS	DOC	CW	YG	MARB	BF	REA	API	TI	
	8.3	57.9	-0.4	0.18	-0.091	1.15	128.4	87.2	
	85	1	50	50	15	10	60	25	

This is one of the bigger-framed red bulls in the offering, backed by a dependable Red River dam. With a yearling weight of 1,528 pounds, he brings impressive growth potential to the table.



LOT 71 **QB M99** GENOMIC ENHANCED **3/4 SM 1/4 AR**

ASA# 4379137 | Red Non-Diluter Homo Polled | BD: 3/7/2024

SIRE SBSF EASTWOOD 22E
SPRINGCREEK CLYDE 93H
SWAN LAKE GRACE 15 C

DAM HXC CONQUEST 4405P
MISS GD E3
MISS GD C66

BW	101
ADJ. WW	744
1/11 WT	1270
ADJ. YW	1495
ADJ. SC	43.1
WDA	4.12
ADG	4.72

% EPDS	CE	BW	WW	YW	ADG	MCE	MM	MWW	STAY
	7.4	2.2	86.5	128.6	0.26	5.3	28.8	72	18.1
	99	90	20	30	55	80	15	15	15
% EPDS	DOC	CW	YG	MARB	BF	REA	API	TI	
	14.9	27.9	-0.37	-0.01	-0.079	0.77	112.3	74.8	
	20	70	15	99	10	35	85	75	

Long stay red cow in the herd that we bought a number of years ago from G and D Simmentals. Very big framed calf that is well put together.

LOT 69 **QB M94** GENOMIC ENHANCED **PB SM**

ASA# 4379173 | Red Non-Diluter Homo Polled | BD: 3/19/2024

SIRE SBSF EASTWOOD 22E
SPRINGCREEK CLYDE 93H
SWAN LAKE GRACE 15 C

DAM RFS BULLETPROOF B42
DCR MS BULLETPROOF G411
DCR MS GAME FACE C350

BW	90
ADJ. WW	762
1/11 WT	1245
ADJ. YW	1547
ADJ. SC	38.7
WDA	4.21
ADG	4.92

% EPDS	CE	BW	WW	YW	ADG	MCE	MM	MWW	STAY
	6.8	2	89.4	125.4	0.23	5.5	28.8	73.5	15.2
	95	70	15	35	65	60	15	10	55
% EPDS	DOC	CW	YG	MARB	BF	REA	API	TI	
	11.9	37.1	-0.35	0.08	-0.076	0.87	122.6	82.8	
	50	20	70	70	50	50	70	40	

This dark red calf is out of a cow we purchased from Doll Simmentals a few years ago. He's stoutly built, with a powerful frame and plenty of natural size.

LOT 70 **QB M29** GENOMIC ENHANCED **PB SM**

ASA# 4379117 | Hetero Black Homo Polled | BD: 3/4/2024

SIRE SBSF EASTWOOD 22E
SPRINGCREEK CLYDE 93H
SWAN LAKE GRACE 15 C

DAM MCM TOP GRADE 018X
TSN MISS TOP GRADE C880
TSN MISS ESCALADE U510

BW	95
ADJ. WW	785
1/11 WT	1335
ADJ. YW	1591
ADJ. SC	41.9
WDA	4.29
ADG	5.05

% EPDS	CE	BW	WW	YW	ADG	MCE	MM	MWW	STAY
	8	1.9	79.3	108.5	0.18	7.3	29.9	69.5	21.2
	90	65	45	70	95	30	10	20	3
% EPDS	DOC	CW	YG	MARB	BF	REA	API	TI	
	10.7	27.5	-0.36	0.22	-0.078	0.76	139.8	80.6	
	65	50	65	40	50	75	40	50	

This is a powerful and impressive heterozygous black calf sired by Clyde. He's packed with volume and capacity, showcasing a bold rib shape and excellent depth of body. Strong-topped and wide-hipped.

LOT 72 **QB M34** GENOMIC ENHANCED **PB SM**

ASA# 4379073 | Red Non-Diluter Homo Polled | BD: 3/12/2024

SIRE SBSF EASTWOOD 22E
SPRINGCREEK CLYDE 93H
SWAN LAKE GRACE 15 C

DAM WS SOLOMAN X186
KSR DORI 743D
KSR STAR 943U

BW	94
ADJ. WW	736
1/11 WT	1160
ADJ. YW	1395
ADJ. SC	38.4
WDA	3.83
ADG	4.12

% EPDS	CE	BW	WW	YW	ADG	MCE	MM	MWW	STAY
	11.5	-1.4	64.9	77.8	0.08	8.2	25.7	58.1	17.9
	50	10	95	99	99	20	30	70	25
% EPDS	DOC	CW	YG	MARB	BF	REA	API	TI	
	8.7	13.5	-0.42	0.22	-0.094	0.63	136.5	75.8	
	85	95	40	40	15	95	45	70	

This bull offers excellent calving ease potential, backed by a long-standing red cow in our herd known for her consistency. Last year, she raised a full brother that sold to Troy Knecht. This bull carries a smooth design, balanced structure, and dependable genetics.

LOT 73 **QB M07** GENOMIC ENHANCED **PB SM**

ASA# 4379288 | Red Non-Diluter Homo Polled | BD: 2/23/2024

SIRE DCR MR HARD IMPACT H69
DCR MR KILLIAN K70
DCR MISS IMPERIAL H95

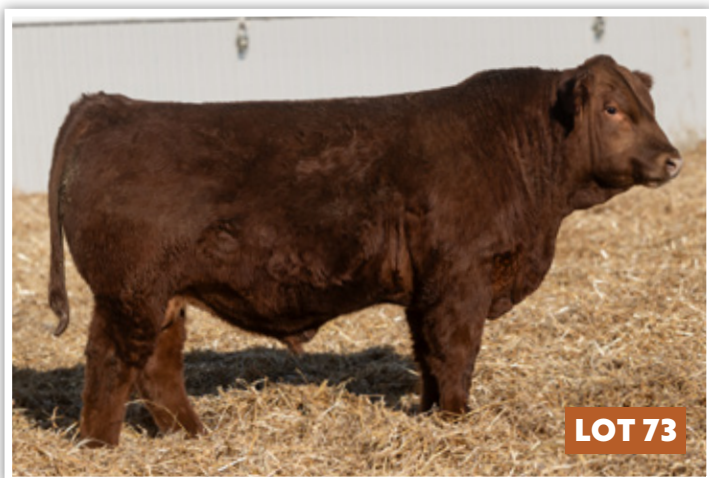
DAM WS EPIC E152
QB MS K211
TRAXS MISS PEND D662

BW	88
ADJ. WW	809
1/11 WT	1310
ADJ. YW	1604
ADJ. SC	37.4
WDA	4.08
ADG	4.99

EPDS	CE	BW	WW	YW	ADG	MCE	MM	MWW	STAY
	16.1	1.8	109.6	166.2	0.35	9.3	23.4	78.1	13.8
%	10	65	1	1	4	10	50	3	70

EPDS	DOC	CW	YG	MARB	BF	REA	API	TI
	16.2	47.8	-0.38	0.12	-0.068	1.14	144.5	97.9
%	10	5	55	65	70	10	30	5

This calf is out of a first-calf heifer and represents an outcross D662 daughter. Weaning at 809 pounds and finishing with an impressive yearling weight of 1,604 pounds, he has been a standout among the reds all year. We've been especially pleased with how Killian has worked on our red heifers.



LOT 74 **QB M65** GENOMIC ENHANCED **3/4 SM 1/4 CS**

ASA# 4379313 | Red Non-Diluter Homo Polled | BD: 2/21/2024

SIRE DCR MR HARD IMPACT H69
DCR MR KILLIAN K70
DCR MISS IMPERIAL H95

DAM SPRINGCREEK CLYDE 93H
QB MS K240
KR MS F46

BW	76
ADJ. WW	787
1/11 WT	1115
ADJ. YW	1318
ADJ. SC	38.3
WDA	3.45
ADG	3.34

EPDS	CE	BW	WW	YW	ADG	MCE	MM	MWW	STAY
	14.9	0.3	96.2	141.7	0.28	8.6	29.8	77.8	15.5
%	25	55	3	15	40	25	15	3	45

EPDS	DOC	CW	YG	MARB	BF	REA	API	TI
	13.2	25	-0.44	0.37	-0.071	1.02	145.3	94
%	40	75	3	50	10	10	35	10

This bull is a strong calving ease prospect, combining a low birth weight with impressive growth. He weaned at 787 pounds and reached a yearling weight of 1,318 pounds, showcasing his performance potential. Additionally, he boasts 10 EPDs ranking in the top 25% of the breed.



LOT 75 **QB M105** GENOMIC ENHANCED **PB SM**

ASA# 4379295 | Red Non-Diluter Homo Polled | BD: 2/25/2024

SIRE DCR MR HARD IMPACT H69
DCR MR KILLIAN K70
DCR MISS IMPERIAL H95

DAM TRAX RED RIVER E84
QB MS K220
KS MISS BEEF KING A573

BW	79
ADJ. WW	747
1/11 WT	1205
ADJ. YW	1485
ADJ. SC	38.5
WDA	3.78
ADG	4.64

EPDS	CE	BW	WW	YW	ADG	MCE	MM	MWW	STAY
	13.6	0.3	93.5	139.6	0.29	8.3	26	72.6	11.8
%	25	35	10	15	25	15	30	10	90

EPDS	DOC	CW	YG	MARB	BF	REA	API	TI
	11	54.8	-0.52	0.31	-0.091	1.5	144.8	95.4
%	60	2	5	30	15	1	30	10

This calf goes back to a proven Red River dam and is exceptionally well put together. He combines structural correctness with a strong genetic profile, boasting 15 categories in the top 35% of the breed.





An impressive B714 son, this bull boasts excellent growth numbers and stands out as a high-performing half-blood. He's tall-framed, deep-bodied, and well-balanced, combining size and capacity with an eye-appealing design.

LOT 76 **QB M44** GENOMIC ENHANCED 1/2 SM 1/2 AN
 ASA# 4379094 | Homo Black Homo Polled | BD: 2/27/2024 | ET

SIRE BASIN PAYWEIGHT 1682
DEER VALLEY GROWTH FUND
 DEER VALLEY RITA 36113

DAM WCS MR LAST CALL 212Z
QB MS LAST CALL B714
 KS MISS ADVANCE Y714

BW	94
ADJ. WW	773
1/11 WT	1420
ADJ. YW	1676
ADJ. SC	37.6
WDA	4.48
ADG	5.69

CE	BW	WW	YW	ADG	MCE	MM	MWW	STAY
9.6	1.1	89.3	157.4	0.43	5.4	27.4	71.9	13.1
85	70	15	2	1	75	25	15	70

DOC	CW	YG	MARB	BF	REA	API	TI
14.3	66.2	-0.11	0.49	-0.019	0.91	138.9	90.9
30	2	85	30	85	15	45	20

LOT 77 **QB M46** GENOMIC ENHANCED 1/2 SM 1/2 AN
 ASA# 4379136 | Homo Black Homo Polled | BD: 3/6/2024 | ET

SIRE BASIN PAYWEIGHT 1682
DEER VALLEY GROWTH FUND
 DEER VALLEY RITA 36113

DAM WCS MR LAST CALL 212Z
QB MS LAST CALL B714
 KS MISS ADVANCE Y714

BW	98
ADJ. WW	763
1/11 WT	1360
ADJ. YW	1629
ADJ. SC	39
WDA	4.4
ADG	5.46

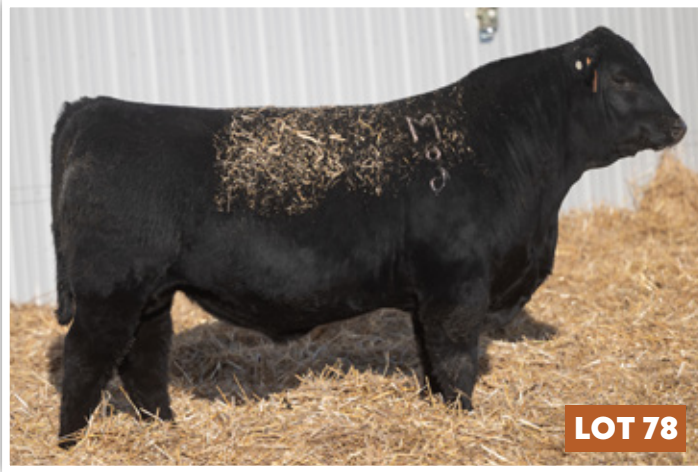
CE	BW	WW	YW	ADG	MCE	MM	MWW	STAY
10.1	2.6	93.7	158.9	0.41	5.8	27.4	74	14
85	90	5	2	1	70	25	10	60

DOC	CW	YG	MARB	BF	REA	API	TI
12.4	73.2	-0.11	0.26	-0.025	0.95	127.3	85.9
50	1	85	70	70	15	65	35

The only calf we have out of this flush, this impressive half-blood bull goes back to the influential B714 flush cow. He stands out with exceptional eye appeal, boasting high weaning and yearling weights. Strong-topped and long-bodied.



Only resilient calf we have in the sale this year but he's just like the ones last year that averaged 7600. He is one of the bigger calves in the pen at 818 weaning and 1737 yearling. He also possesses good maternal EPD's.



LOT 78 **QB M66** GENOMIC ENHANCED ◀
1/2 SM 1/2 AN

ASA# 4379297 | Homo Black Homo Polled | BD: 2/26/2024

SIRE SITZ STELLAR 726D
SITZ RESILIENT 10208
SITZ MISS BURGESS 1856

DAM HART ASSULT 059G
QB MS K222
QB F819

BW	83
ADJ. WW	818
1/11 WT	1410
ADJ. YW	1737
ADJ. SC	38.1
WDA	4.43
ADG	5.81

CE	BW	WW	YW	ADG	MCE	MM	MWW	STAY
8.2	-0.1	92	149.2	0.36	4.3	27.5	73.5	11
95	50	10	5	10	90	25	10	85

DOC	CW	YG	MARB	BF	REA	API	TI
7.1	39.8	-0.13	0.39	-0.029	0.57	128.2	90.5
95	30	80	50	70	70	60	20

LOT 79 **QB M32** GENOMIC ENHANCED ◀
1/2 SM 1/2 AN

ASA# 4379281 | Homo Black Homo Polled | BD: 2/18/2024

SIRE CONNEALY COMRADE 1385
KESSLERS COMMODORE 6516
KESSLERS RAINBOW 0595

DAM SPRINGCREEK IRONSIDES 53G
QB MS K204
KNH PLAY ON 458Z

BW	90
ADJ. WW	829
1/11 WT	1395
ADJ. YW	1672
ADJ. SC	38.6
WDA	4.28
ADG	5.32

CE	BW	WW	YW	ADG	MCE	MM	MWW	STAY
11.1	1.8	101.8	172	0.44	8.9	25.8	78	11.6
70	85	1	1	1	20	35	3	80

DOC	CW	YG	MARB	BF	REA	API	TI
11.8	68.9	-0.05	0.32	-0.038	0.63	131.5	93.1
60	1	95	60	55	60	55	15

The Commodore calves have been the largest half-bloods in the pen this year, and this bull is no exception. He's tall-framed, strong-topped, and carries a commanding presence. Out of a productive Z458 x Ironsides dam, whose sisters have performed exceptionally well in the herd, this bull combines size, structure, and maternal reliability.

LOT 80 **QB M42** GENOMIC ENHANCED ◀
1/2 SM 1/2 AN

ASA# 4379287 | Homo Black Homo Polled | BD: 2/16/2024

SIRE CONNEALY COMRADE 1385
KESSLERS COMMODORE 6516
KESSLERS RAINBOW 0595

DAM SPRINGCREEK IRONSIDES 53G
QB MS K210
KNH PLAY ON 458Z

BW	87
ADJ. WW	796
1/11 WT	1300
ADJ. YW	1539
ADJ. SC	39
WDA	3.96
ADG	4.7

CE	BW	WW	YW	ADG	MCE	MM	MWW	STAY
11.4	2.9	112.3	185.5	0.46	8.8	24.8	81.6	16.5
70	95	1	1	1	25	45	1	30

DOC	CW	YG	MARB	BF	REA	API	TI
13.3	76.8	-0.02	0.64	-0.023	0.74	160.7	105.7
40	1	95	15	70	40	15	1

LOT 81 **QB M70** GENOMIC ENHANCED ◀
1/4 SM 3/4 AN

ASA# 4379326 | Homo Black Homo Polled | BD: 2/17/2024

SIRE CONNEALY COMRADE 1385
KESSLERS COMMODORE 6516
KESSLERS RAINBOW 0595

DAM DEER VALLEY GROWTH FUND
QB MS K256
ASR MS DESI Z2110

BW	74
ADJ. WW	717
1/11 WT	1160
ADJ. YW	1376
ADJ. SC	40.1
WDA	3.55
ADG	4.17

CE	BW	WW	YW	ADG	MCE	MM	MWW	STAY
15.8	-3.1	76.1	127.7	0.32	10.9	24.8	64.1	13.1
20	10	55	35	25	5	40	45	70

DOC	CW	YG	MARB	BF	REA	API	TI
12.2	50.0	0.0	0.44	0.003	0.55	140.0	84.3
60	15	95	45	95	75	45	45

This is the lowest-percentage bull in the pen, but he turned out exceptionally well. A true heifer bull prospect, he's well-built, structurally sound, and offers plenty of muscle and dimension.



These two Commodore calves are out of full sisters, bringing nearly identical genetics and similar outcomes. Both calves have impressed all year with their consistency, making it difficult to separate them.



LOT 82

LOT 82 **QB M39** GENOMIC ENHANCED 1/2 SM 1/2 AN
 ASA# 4379302 | Hetero Black Homo Polled | BD: 3/8/2024

SIRE WL STELLAR 128
 WL N33 FANCY BEAUTY 473-959

DAM QB MS K228
 WS EPIC E152
 TRAXS MISS PEND D662

BW	82
ADJ. WW	731
1/11 WT	1175
ADJ. YW	1477
ADJ. SC	35.1
WDA	3.83
ADG	4.72

EPDS	CE	BW	WW	YW	ADG	MCE	MM	MWW	STAY
	16.8	-1	95	140.1	0.28	6.2	25.7	73.1	7.5
%	15	35	4	15	40	65	35	10	99

EPDS	DOC	CW	YG	MARB	BF	REA	API	TI
	14.3	50.1	-0.1	0.3	0.009	0.9	128.1	91.3
%	30	10	85	65	95	20	60	20

This is a really thick and stout half-blood bull with strong calving ease numbers. He's out of another productive D662 daughter, known for adding consistency and maternal strength. With his muscular build, balanced profile, and smooth calving ease attributes.

LOT 83 **QB M73** GENOMIC ENHANCED 1/2 SM 1/2 AN
 ASA# 4379276 | Homo Black Homo Polled | BD: 3/11/2024

SIRE WL STELLAR 128
 WL N33 FANCY BEAUTY 473-959

DAM KBHR MS CIMARRON K193
 KBHR CIMARRON F151
 KBHR SWEET SISTER H027

BW	75
ADJ. WW	718
1/11 WT	1110
ADJ. YW	1399
ADJ. SC	32.3
WDA	3.65
ADG	4.31

EPDS	CE	BW	WW	YW	ADG	MCE	MM	MWW	STAY
	16.6	-3.8	77.9	116.8	0.24	6.8	26.7	66.4	17
%	15	5	45	55	70	55	30	30	25

EPDS	DOC	CW	YG	MARB	BF	REA	API	TI
	14.2	36.3	0.06	0.7	0.04	0.47	166.6	93.8
%	30	40	99	10	99	85	10	10

This is the first natural calf out of our Keller flush cow, K193. He's what we'd confidently call a "sleep-all-night" heifer bull, offering calving ease on both sides of his pedigree.

LOT 84 **QB M09** GENOMIC ENHANCED 1/2 SM 1/2 AN
 ASA# 4379332 | Homo Black Homo Polled | BD: 3/6/2024

SIRE WL GEYSER 2113
 WL CV PETRONITE 301-785

DAM QB MS K262
 SPRINGCREEK IRONSIDES 53G
 TRAXS MISS PEND D662

BW	84
ADJ. WW	722
1/11 WT	1200
ADJ. YW	1509
ADJ. SC	38.5
WDA	3.88
ADG	4.98

EPDS	CE	BW	WW	YW	ADG	MCE	MM	MWW	STAY
	11.4	1.7	97.9	161.3	0.4	10.4	23.2	72.1	9.2
%	70	80	3	2	2	10	60	10	95

EPDS	DOC	CW	YG	MARB	BF	REA	API	TI
	14.1	70.2	-0.03	0.12	-0.003	0.87	113.1	85
%	30	1	95	90	90	20	85	35

The D662 daughters have made a significant impact on the sale, and this calf continues that legacy. He's a really stout bull with a strong, level topline and impressive depth of body.



LOT 84

LOT 85 **QB M13** GENOMIC ENHANCED
3/8 SM 19/32 AN 1/32 CS

ASA# 4379320 | Homo Black Homo Polled | BD: 3/12/2024

SIRE HART ALMIGHTY 2358
HART CHANRAE 9574

DAM QB MS K248
QB MS G938

BW	81
ADJ. WW	857
1/11 WT	1400
ADJ. YW	1774
ADJ. SC	37.4
WDA	4.62
ADG	5.79

% EPDS	CE	BW	WW	YW	ADG	MCE	MM	MWW	STAY
	12.3	0.7	100.6	165.5	0.41	10.2	29	80	14.3
	55	65	2	1	1	10	15	2	55

% EPDS	DOC	CW	YG	MARB	BF	REA	API	TI
	14.7	69	-0.13	0.61	-0.015	1.04	151.6	99.7
	25	1	80	20	85	10	25	3

This calf offers a great combination of low birth weight and strong growth. Starting with an 86-pound birth weight and weaning at 857 pounds, he's a well-balanced 3/8 bull. With his smooth build, structural correctness, and performance potential.



LOT 85

LOT 86 **QB M68** GENOMIC ENHANCED
1/2 SM 1/2 AN

ASA# 4379304 | Homo Black Homo Polled | BD: 3/11/2024

SIRE HART ALMIGHTY 2358
HART CHANRAE 9574

DAM WHEATLAND MAN O` WAR 907G
QB MS K230
KNH PLAY ON 458Z

BW	80
ADJ. WW	781
1/11 WT	1265
ADJ. YW	1601
ADJ. SC	36.3
WDA	4.16
ADG	5.19

% EPDS	CE	BW	WW	YW	ADG	MCE	MM	MWW	STAY
	13	0.9	88.6	139.7	0.32	9	25.6	69.9	6.2
	45	70	15	15	20	20	40	20	99

% EPDS	DOC	CW	YG	MARB	BF	REA	API	TI
	13.3	57.8	-0.25	0.26	-0.037	1.12	114.9	85.1
	40	4	45	70	55	3	80	35

This is the first calf out of a productive Z458 daughter, and he's off to a strong start. Weaning at 781 pounds and backed by 7 EPDs in the top 20% of the breed, he combines performance with balanced genetics.



LOT 86

LOT 87 **QB M41** GENOMIC ENHANCED
1/2 SM 1/2 AN

ASA# 4379311 | Homo Black Homo Polled | BD: 3/8/2024

SIRE HART ALMIGHTY 2358
HART CHANRAE 9574

DAM SPRINGCREEK IRONSIDES 53G
QB MS K238
KNH PLAY ON 458Z

BW	75
ADJ. WW	758
1/11 WT	1280
ADJ. YW	1620
ADJ. SC	33.6
WDA	4.17
ADG	5.44

% EPDS	CE	BW	WW	YW	ADG	MCE	MM	MWW	STAY
	13.7	1	98.1	168.8	0.44	11.6	22.8	72.5	14.7
	40	70	3	1	1	3	60	10	50

% EPDS	DOC	CW	YG	MARB	BF	REA	API	TI
	13.5	61.8	-0.07	0.6	-0.024	0.72	156.7	99
	35	3	90	20	70	45	15	4

This bull is out of a first-calf Z458 x Ironsides daughter and offers an excellent balance of calving ease and power. He's packed with substance and muscle, while maintaining a smooth, well-designed frame. With 7 EPDs ranking in the top 10% of the breed.



LOT 87

LOT 88 **QB M85** GENOMIC ENHANCED ◀
1/2 SM 1/2 AN

ASA# 4379293 | Homo Black Homo Polled | BD: 3/17/2024

SIRE HART ALMIGHTY 2358
HART CHANRAE 9574
DAM QB MS K218
WHEATLAND MAN O` WAR 907G
KNH PLAY ON 458Z

BW	95
ADJ. WW	736
1/11 WT	1110
ADJ. YW	1419
ADJ. SC	35.6
WDA	3.72
ADG	4.32

EPDS	CE	BW	WW	YW	ADG	MCE	MM	MWW	STAY
%	9.4	1.8	91.9	142.5	0.32	7	23.7	69.5	13.5
%	90	85	10	10	20	50	55	20	65
EPDS	DOC	CW	YG	MARB	BF	REA	API	TI	
%	13.3	42.6	-0.16	0.5	-0.024	0.75	136.7	90.6	
%	40	25	70	30	70	40	45	20	

The dam of this bull is a full sibling to Lot 86 and a half-sibling to Lot 87, all calves sharing the same sire. Based on these three, it's clear that Z458 was truly a cow maker. This calf carries the same outstanding attributes—clean fronted, sharp headed, and well-balanced. A smooth and stylish bull that showcases the consistent quality of this pedigree.

LOT 90 **QB M96** GENOMIC ENHANCED ◀
5/8 SM 3/8 AN

ASA# 4379111 | Hetero Black Hetero Polled | BD: 3/28/2024

SIRE QB K71
BCLR GOLIATH F009
PRAIRIE PRIDE GYPSY GAL 3010
DAM TSN MISS BEEF KING C754
WS BEEF KING W107
TSN MISS FORCE T107

BW	108
ADJ. WW	776
1/11 WT	1220
ADJ. YW	1525
ADJ. SC	39.7
WDA	4.25
ADG	4.71

EPDS	CE	BW	WW	YW	ADG	MCE	MM	MWW	STAY
%	9.5	2.9	80.2	125.9	0.29	4.9	27.5	67.9	18.6
%	90	95	35	35	35	85	25	25	15
EPDS	DOC	CW	YG	MARB	BF	REA	API	TI	
%	12.4	31.5	-0.36	0.42	-0.056	0.97	137	81.5	
%	50	55	15	45	30	10	45	50	

This calf has been a standout all year, showcasing a tall, long-bodied, and stout build. He's consistently impressed on the scale, combining size, growth, and structural soundness.

**VIEW VIDEOS
& BID ONLINE**
WWW.DVAUCTION.COM



LOT 89 **QB M72** GENOMIC ENHANCED ◀
5/8 SM 3/8 AN

ASA# 4379275 | Homo Black Homo Polled | BD: 3/8/2024

SIRE MR GD OTRIDER K224
EGL FIRESTEEL 103F
LCDR MS HALLIE 36H
DAM MARTIN K214
S A V RAINFALL 6846
LCDR MS FLORIDA 65F

BW	90
ADJ. WW	720
1/11 WT	1160
ADJ. YW	1449
ADJ. SC	36.6
WDA	3.78
ADG	4.61

EPDS	CE	BW	WW	YW	ADG	MCE	MM	MWW	STAY
%	9.5	-0.1	86.7	134.9	0.3	3.9	24.3	67.7	12.8
%	90	50	15	20	30	95	50	25	70
EPDS	DOC	CW	YG	MARB	BF	REA	API	TI	
%	16	45.8	-0.35	0.45	-0.059	1.11	135.1	89.4	
%	15	20	15	40	30	4	50	25	

This bull brings outcross genetics to our program, out of a first-calf heifer we purchased last year from Martian Simmentals. He's a unique 5/8 calf with a solid outcross pedigree, combining fresh bloodlines with performance potential.

LOT 91 **QB M58** GENOMIC ENHANCED ◀
PB SM

ASA# 4379105 | Homo Black Homo Polled | BD: 2/27/2024

SIRE QB J03
TJ GOLD 274G
KNH PLAY ON 458Z
DAM TSN MISS AXIS S C178
KRJ A399
TSN MISS ANSWER Y856

BW	86
ADJ. WW	733
1/11 WT	1240
ADJ. YW	1438
ADJ. SC	38.1
WDA	3.91
ADG	4.43

EPDS	CE	BW	WW	YW	ADG	MCE	MM	MWW	STAY
%	13.6	-0.8	82.8	123.2	0.25	7.4	19.4	60.8	14.7
%	25	15	35	35	50	30	80	55	60
EPDS	DOC	CW	YG	MARB	BF	REA	API	TI	
%	14	20.4	-0.12	0.48	-0.012	0.42	155	91.7	
%	25	80	99	10	99	99	20	15	

This bull is sired by a Z458 son we retained in the herd and brings a nice balance of calving ease and growth. His dam has been a consistent and productive cow throughout her life, raising four bulls that made the sale throughout the years, including one sold to Holm Ranch last year.

LOT 92 **QB M79** GENOMIC ENHANCED ◀
PB SM

ASA# 4379201 | Homo Black Homo Polled | BD: 3/21/2024

SIRE QB J03
TJ GOLD 274G
KNH PLAY ON 458Z
DAM QB MS H015
WS CERTIFIED E151
TRAXS MISS RIDDLER F842

BW	86
ADJ. WW	768
1/11 WT	1170
ADJ. YW	1454
ADJ. SC	34.9
WDA	3.98
ADG	4.31


EPDS	CE	BW	WW	YW	ADG	MCE	MM	MWW	STAY
%	15.5	-0.1	81.8	129.3	0.3	8	22.6	63.4	19.1
%	10	25	35	25	20	20	55	45	15
EPDS	DOC	CW	YG	MARB	BF	REA	API	TI	
%	13.8	26.3	-0.27	0.29	-0.047	0.68	156.7	87.4	
%	25	55	95	30	95	90	15	25	

This calf is exceptionally wide-based and strong-topped, with impressive depth of body and natural capacity. He's performed well and displays a balanced, growth-oriented design.

GENERAL INFORMATION

HERD HEALTH The bulls for sale received vaccination against the major respiratory, clostridial and reproductive diseases. They have all been fully vaccinated for IBR, BRSV, BVD Types 1 & 2, PI3 and Histophilus as well as Mannheimia/Pastuerella and Mycoplasma. The bulls have been treated for internal and external parasites using approved products. All the bulls have received a magnet. Bulls will pass a breeding soundness exam prior to delivery and receive 2 doses of Fusogard (footrot) as well as Anthrax, Pinkeye and Virashield 6 VL5HB vaccination upon delivery.

The bred heifers were vaccinated identically to the bulls prior to breeding and included the additional two doses of reproductive vaccination for Leptospirosis and Campylobacter (PregGuard Gold FP10). They will have received 2 doses of ScourBos 9 as well by sale day.

GENETIC TESTING All bulls have been GPP 100K tested which includes parentage validation and the resultant data incorporated into their EPD records. 

SALE TERMS & CONDITIONS All cattle will sell under terms and conditions adopted by the American Simmental Association. Each animal becomes property and therefore is also at the risk of the purchaser after sold. We guarantee all bulls are healthy on sale day. For animals not going home sale day, we suggest insuring. We will feed the bulls until April 1st free of charge. After April 1st, if the buyer can't receive the animal, we will charge a per-day feed charge. All of the bulls will undergo a breeding soundness exam before delivery around April 1st. All bulls are guaranteed for fertility and genetic soundness for the first breeding season. If a bull does not pass the semen test or is injured before delivery, we will provide either a credit or a refund.

This guarantee does not cover injuries such as broken legs, infectious diseases, mismanagement, neglect, frozen scrotal conditions, or hoof rot. Therefore, we strongly encourage you to consider insuring your bulls.

If a bull is found to be unsound due to a genetically caused condition in the following year, we will stand behind him with the same level of commitment.

We encourage you to reach out to us as soon as an issue arises, rather than waiting until after the breeding season, so we can promptly assess the situation. Our vet may need to evaluate the bull or review photos to determine the best course of action.

SEMEN INTEREST Quandt Cattle Company are selling all bulls in their entirety. Full possession, and 100% semen interest in all bulls will be sold. Quandt Cattle Company does reserve the right to in-herd use semen on any bull in the sale, at the cost of collection. Should the need arise for us to collect semen on a bull in your possession, it would be done at our expense and your convenience.

ONLINE BIDDING Can't make the sale? Bid from home with DVAuction's FREE internet bidding. Buying online is as easy as 1,2,3...



- Create an account at dvauction.com under the "register" tab.
- Apply for bidding approval by clicking on the "details" tab at least 24 hours prior to the auction. A DV Representative will notify you once you have been approved.
- Tune in for the sale and make your purchase!

After the sale, contact the sale manager to arrange transportation and payment. High speed internet is required for successful bidding-be sure to check the lag-time monitor in the top left corner to ensure real time broadcasts. Proxy-Bidding - if you can't make time to watch the sale, register to proxy bid and let our system represent your bid while you're away. Look for the "proxy bid" tab on the auction listing, and fill in your maximum bids. We'll handle the rest. Having Trouble? During the auction, you can type a message to the operator at any time for assistance. Our full-time support team can also always be reached at 402-474-5557.

YEARLING WEIGHTS & SCROTAL MEASUREMENTS Weights and measurements were taken by Dr. Colin Galbreath on 1/11/2025. The scrotal measurements were adjusted to yearling, and sometimes will vary one way or another as actual yearlings. We guarantee our bulls 100% for fertility, unless damage is induced at your ranch and it's out of our control.

RECOMMENDATIONS FOR SCROTAL CIRCUMFERENCE

MONTHS OF AGE	12-14	15-20	21-30	30+	
SCROTAL CM	35	37	39	49	Excellent
	30-35	31-37	32-39	33-40	Good
	30	31	32	33	Poor

THE BRED HEIFER OFFERING

WE ARE EXCITED TO ONCE AGAIN BE OFFERING AN EXCEPTIONAL SELECTION OF REGISTERED BRED HEIFERS.

This outstanding group of registered Simmental bred heifers represents the next generation of productive, high-performing females. These heifers are backed by proven pedigrees that combine maternal strength, fertility, and structural soundness. We are particularly proud that last year's set of heifers produced 24 bulls featured in this year's sale and 25 replacements for the heifer pen—a true testament to their productivity.

This group boasts a great disposition, stemming from sires and dams that have been integral to our herd for years. These heifers have been developed on a balanced nutrition program, ensuring longevity.

We strongly encourage you to view these heifers before sale day, as they are an impressively uniform set. On sale day, they will be penned in groups of five based on calving date. They will sell as groups starting off with the blue group and ending with the red group. If you are planning to purchase a group, we recommend bringing a trailer on sale day.

Whether you are looking to enhance the maternal base of your operation or add exceptional replacement females, this set of Simmental bred heifers offers outstanding potential to elevate your herd.

SERVICE SIRES



SQUARE B TRUE NORTH 8052



CRAWFORD GUARANTEE 9137



KESSLERS COMMODORE 6516



DCR MR KILLIAN K70

ASA #	Tattoo	Bred To	Calving Date	Days Bred 8/16	Breeds	CE	WW	YW	MCE	MILK	DOC	API	TI	SIRE	DAM
BLUE TAG GROUP															
4220866	L306	True North	3/7/25	85b	3/4 SM 3/16 AN 1/16 CS	6.3	84.1	120.1	5	24	13.1	121.6	78.6	ES UPPER EDGE E480B	QB MS G912
4220926	L355	True North	3/7/25	85b	PB SM	8.2	73.5	104.7	5.4	18.4	15.4	129.9	75.8	ES UPPER EDGE E480B	QB MS H060
4220978	L380	True North	3/9/25	82h	3/8 SM 5/8 AN	9.1	94.3	151.5	3.7	23.6	9.6	138.7	91.1	SITZ RESILIENT 10208	QB MS J157
4220910	L357	True North	3/12/25	80h	PB SM	7.8	82.9	137.9	4.3	17	12.3	113	77.3	QB J56	QB MS H038
4220870	L315	True North	3/12/25	80h	PB SM	11.7	73.4	109.1	8.1	22.1	17.2	147.3	82.8	ES UPPER EDGE E480B	QB MS G921
ORANGE TAG GROUP															
4220952	L372	Guarantee / Potentially Pasture Sires	3/14/25	78h	1/2 SM 1/2 AN	12.5	92.1	141	6.6	18.4	8.6	153.1	94.7	SITZ RESILIENT 10208	GQ MS J129
4220839	L375	Guarantee / Potentially Pasture Sires	3/17/25	75h	PB SM	6	77.8	114.6	3.3	19.6	11.3	128.9	75.8	DCR MR BENCHMARK F113	QB F811
4220816	L394	True North / Potentially Pasture Sires	3/17/25	75h	PB SM	3.9	92.8	133.1	2.7	23.2	11.7	105.2	75	SPRINGCREEK CLYDE 93H	QB MS E745
4220921	L385	True North / Potentially Pasture Sires	3/19/25	72h	PB SM	4.1	99.1	157.7	3.1	30.3	10.3	117.9	85.8	HART ASSULT 059G	QB MS H054
4220823	L393	True North / Potentially Pasture Sires	3/19/25	72b	PB SM	3.5	95.7	142.4	4.1	20.4	14.5	110.7	81	SPRINGCREEK IRON-SIDES 53G	QB MS E771
GREEN TAG GROUP															
4220965	L386	Pasture Sires	3/22/25	70b	3/4 SM 1/4 AN	13.7	76.3	117.5	6.8	27.5	14.9	151.2	87	LRS RARITY 983J	QB MS J144
4220835	L308	True North / Potentially Pasture Sires	3/24/25	68b	PB SM	9.9	101.1	170	4.7	19.3	12	143.1	93.7	QB J56	QB F804
4220784	L316	True North / Potentially Pasture Sires	3/24/25	68b	PB SM	9.5	73.8	117.3	4.9	20.5	11.4	128.7	74.8	QB J56	TSN MISS UPROAR C772
PINK TAG GROUP															
4220779	L305	Pasture Sires	4/19/25	42	PB SM	15.3	81	124.5	9.1	25.6	15.1	135.3	80.7	DCR MR BENCHMARK F113	TSN MISS TANKER C681
4220865	L352	Pasture Sires	5/25/25	22	PB SM	6	100.2	150.3	2.2	19.7	11.8	141.3	90.6	BCI STRUCTURE J111	TRAXS MISS PEND D662
4220912	L356	Pasture Sires	5/25/25	22	PB SM	5.7	99.2	160.8	5	23.4	14.8	127.8	90.9	ES UPPER EDGE E480B	QB MS H040
YELLOW TAG GROUP															
4220830	L304	Pasture Sires	4/1/25	60b	PB SM	11.7	63	96.8	5.1	24.3	13.2	113.8	68.4	QB J56	QB MS E788
4220795	L381	Pasture Sires	4/1/25	60b	PB SM	11.3	89.9	147.2	5.7	22.5	8.7	129.5	85.9	QB Z32J	QB MS D608
4220886	L319	Pasture Sires	4/6/25	55h	PB SM	9.2	83.1	128.9	4.4	21.2	12	142.9	81.6	BCLR GOLIATH F009	GQ MS G957
4220902	L360	Pasture Sires	4/8/25	58h	PB SM	14.8	80.4	111.9	9.2	20.8	14.9	125.3	79	ES UPPER EDGE E480B	QB MS H023
RED TAG GROUP															
4220789	L345	Killian	3/22/25	70h	PB SM	5.1	82	118.8	5.7	24.8	8.4	120.1	72.8	SPRINGCREEK CLYDE 93H	KBHR D211
4220873	L353	Pasture Sires	4/6/25	55b	PB SM	10.1	85.3	117.9	6.5	26.5	14.3	123.6	79.8	SPRINGCREEK CLYDE 93H	QB MS G926

All groups sell times the money. On sale day, they will be penned in groups based on calving date, They will sell as groups starting off with the blue group and ending with the red group.



RETURN TO:

Quandt Cattle Co.
10861 88th St. SE
Oakes, ND 58474

WWW.QUANDTBROTHERS.COM

FEBRUARY 18, 2025 | OAKES, ND